

Hours Lost Due to Work Related Injury/Illness Emergency Services



KPI Owner: Jordan Mudd

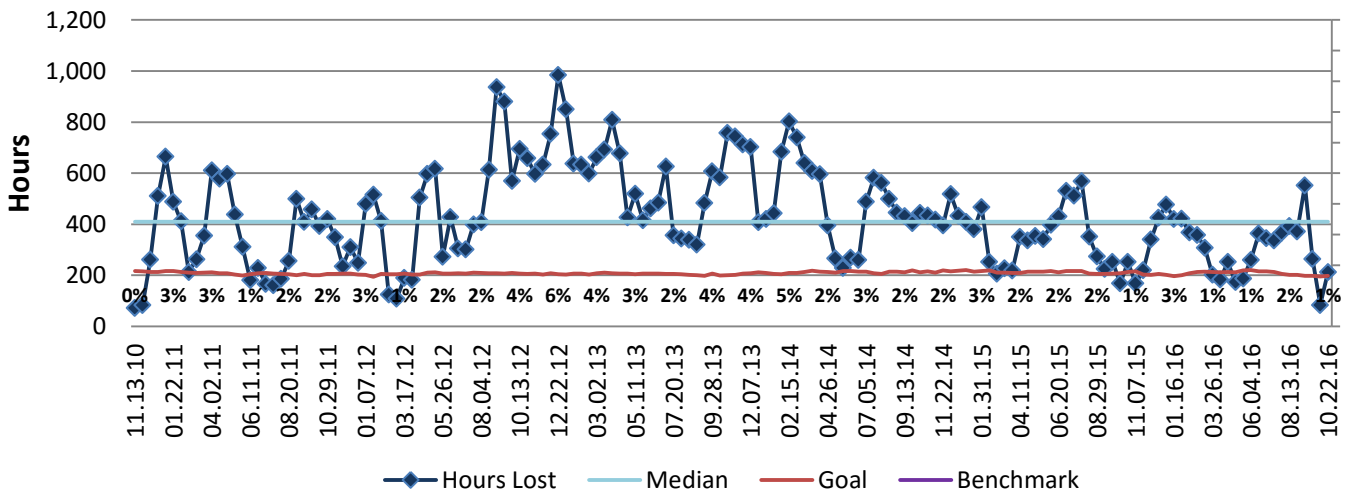
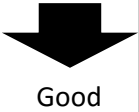
Process: Employee Safety

Baseline, Goal, & Benchmark	Source Summary	Continuous Improvement Summary
Baseline: CY15 Avg 335 hrs/pay period (1.8%) Goal: Reduce hours lost to 1.2% (one standard deviation below CY2015 average) Benchmark: No comparable external benchmark	Data Source: Payable Time PeopleSoft Goal Source: Dept Management Team Benchmark Source: N/A	Plan-Do-Check-Act Step 5: Pilot short term and/or long term solutions Measurement Method: The total number of hours per month employees were absent due to a work place injury or an illness contracted at work, rate calculated by dividing by total standard hours Why Measure: Minimize number & severity of workplace injuries/illness Next Improvement Step: Continue work on developing accident review committee. Conduct a financial analysis of injuries to determine potential cost-savings of upgrading safety equipment.

How Are We Doing?

10.25.15-10.22.16 12 Month Goal	10.25.15-10.22.16 12 Month Actual		10.09.16-10.22.16 Goal	10.09.16-10.22.16 Actual	
5,392	8,052	🚦	198	213	🚦
Hours	Hours		Hours	Hours	

Hours Lost Due to Work Related Injury/Illness



10.25.15-10.22.16 Pareto Analysis

