

Environmental Health: % Public Facilities Not Inspected Public Health & Wellness



KPI Owner: Director of Environmental Health Division

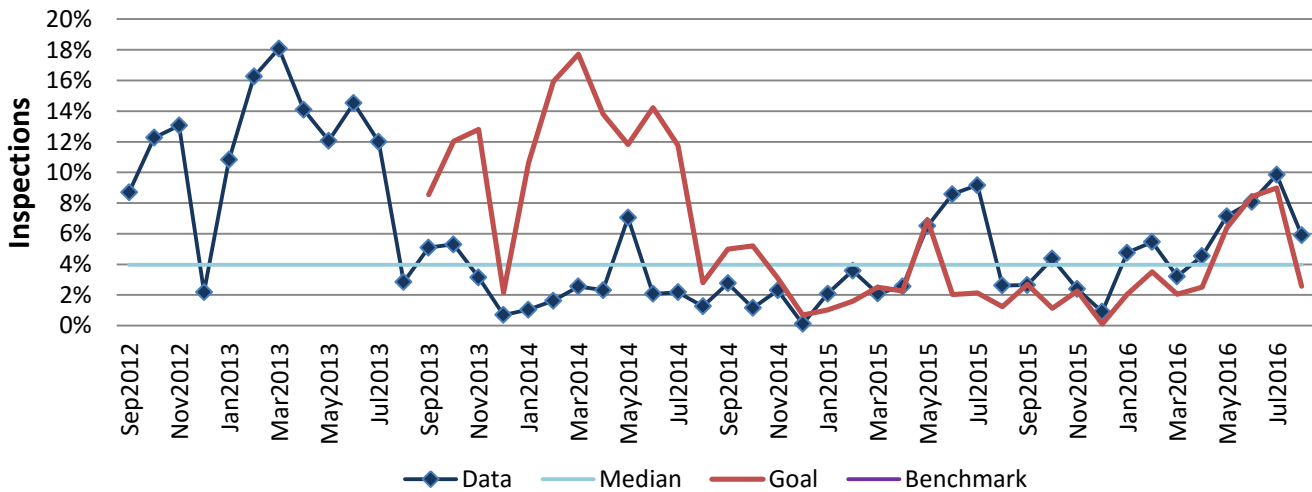
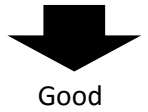
Process: Enforce Laws

| Baseline, Goal, & Benchmark | Source Summary | Continuous Improvement Summary |
|--|--|---|
| Baseline: FY13 9.22% facilities not inspected Goal: In comparison to the same month of the prior year, reduce % of facilities not receiving required inspections by 2%. Benchmark: TBD | Data Source: EHMIS Goal Source: Executive Leadership Benchmark Source: TBD | Plan-Do-Check-Act Step 8: Monitor and diagnose Measurement Method: 12 month rolling count of inspections completed outside of federally mandated timeframe Why Measure: To ensure public safety & comply with Fed and State Law Next Improvement Step: Evaluate high risk facilities |

How Are We Doing?

| Sep2015-Aug2016 12 Month Goal | Sep2015-Aug2016 12 Month Actual | | Aug2016 Goal | Aug2016 Actual | |
|----------------------------------|------------------------------------|--|--------------|----------------|--|
| 4% | 5% | | 3% | 6% | |
| Inspections | Inspections | | Inspections | Inspections | |

Environmental Health: % Public Facilities Not Inspected



The seven basic quality tools, "5 Whys" technique, brainstorming and other methods will be applied to the measure graphed above. The purpose of using the tools/methods is to understand what makes performance less than desirable if performance is not best in class.