

# Hours Lost Due to Work Related Injury/Illness Louisville Free Public Library



KPI Owner: Carrick Arehart

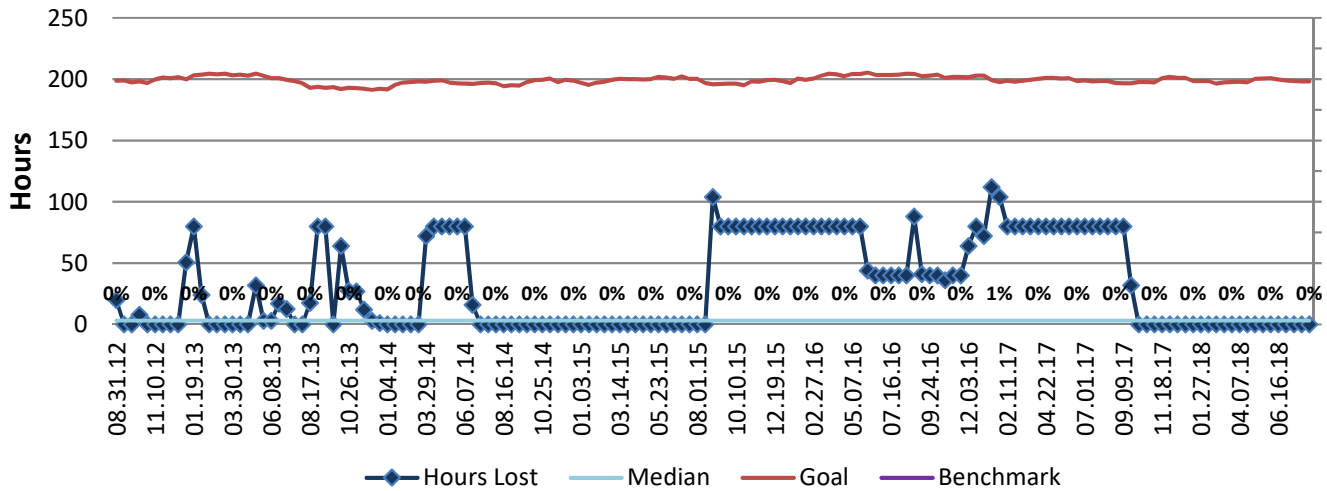
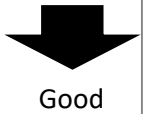
Process: Safety

Baseline, Goal, & Benchmark	Source Summary	Continuous Improvement Summary
Baseline: FY 2011-13 avg rate = 102 hrs/mo Goal: Do not exceed goal rate of 1% of hours worked lost due to illness or injury.  Benchmark: TBD	Data Source: Payable Time PeopleSoft  Goal Source: Scope Summary  Benchmark Source: TBD	Plan-Do-Check-Act Step 4: Generate and prioritize potential solutions Measurement Method: The total number of hours per month employees were absent due to a work place injury or an illness contracted at work, rate calculated by dividing by total standard hours Why Measure: Minimize number & severity of workplace injuries/illness Next Improvement Step: Design job-classification specific safety training program.

### How Are We Doing?

08.13.17-08.11.18 12 Month Goal	08.13.17-08.11.18 12 Month Actual		07.29.18-08.11.18 Goal	07.29.18-08.11.18 Actual	
<b>5,166</b>	<b>192</b>	⬆️	<b>198</b>	<b>0</b>	⬆️
Hours	Hours		Hours	Hours	

## Hours Lost Due to Work Related Injury/Illness



Root cause analysis is not necessary because there is no gap between the goal and current performance.