

Hours Lost Due to Work Related Injury/Illness Louisville Free Public Library



KPI Owner: Carrick Arehart

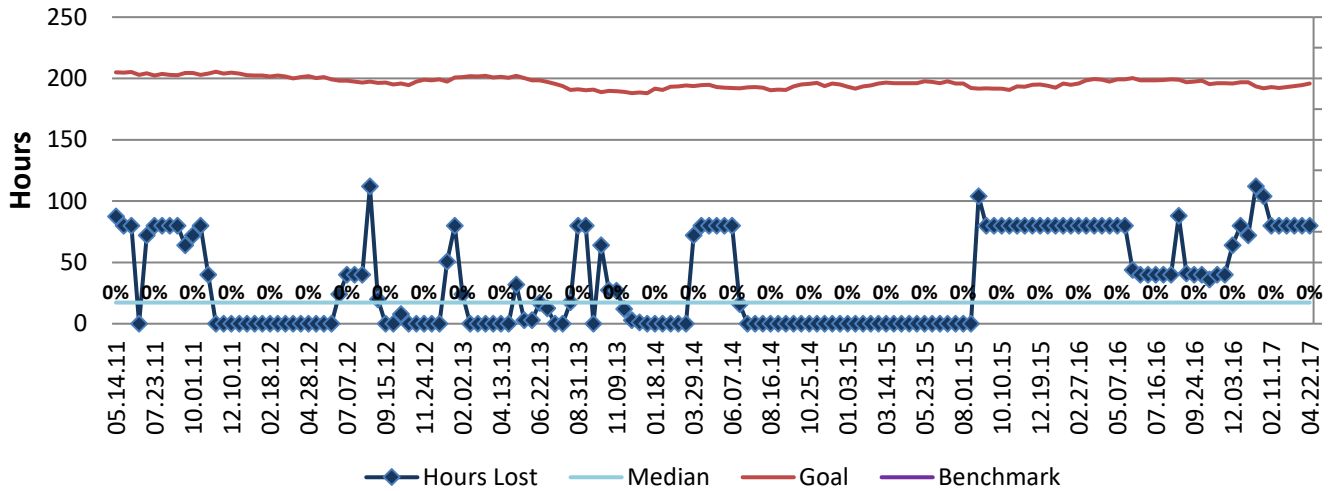
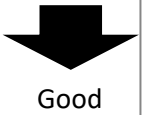
Process: Safety

Baseline, Goal, & Benchmark	Source Summary	Continuous Improvement Summary
Baseline: FY 2011-13 avg rate = 102 hrs/mo Goal: Do not exceed goal rate of 1% of hours worked lost due to illness or injury. Benchmark: TBD	Data Source: Payable Time PeopleSoft Goal Source: Scope Summary Benchmark Source: TBD	Plan-Do-Check-Act Step 4: Generate and prioritize potential solutions Measurement Method: The total number of hours per month employees were absent due to a work place injury or an illness contracted at work, rate calculated by dividing by total standard hours Why Measure: Minimize number & severity of workplace injuries/illness Next Improvement Step: Design job-classification specific safety training program.

How Are We Doing?

04.24.16-04.22.17 12 Month Goal	04.24.16-04.22.17 12 Month Actual		04.09.17-04.22.17 Goal	04.09.17-04.22.17 Actual	
5,109	1,641		196	80	
Hours	Hours		Hours	Hours	

Hours Lost Due to Work Related Injury/Illness



Root cause analysis is not necessary because there is no gap between the goal and current performance.