

Preschool Literacy Program Attendance Louisville Free Public Library



KPI Owner: Art Dietz

Process: Provide Preschool literacy programs

Baseline, Goal, & Benchmark	Source Summary	Continuous Improvement Summary
Baseline: FY2012-13 monthly avg = 3,546 Goal: By June 30, 2017 increase annual attendance by 2% over last fiscal year, from 58,721 to 59,895. Benchmark: N/A	Data Source: LFPL Monthly Report Goal Source: LFPL Strategic Plan Benchmark Source: N/A	Plan-Do-Check-Act Step 8: Monitor and diagnose Measurement Method: Monthly sum of all attendees at preschool literacy programs (J-Infant + J-Family + J-PreSchool + J-Toddler) Why Measure: To continually increase attendance at preschool literacy programs Next Improvement Step: Monitor progress toward new goals.

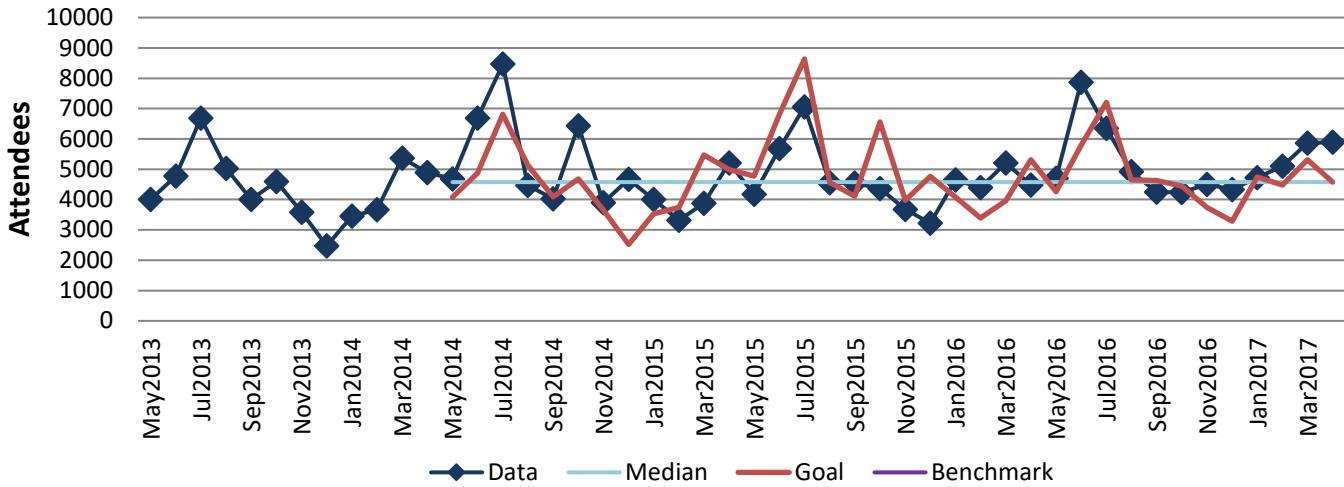
How Are We Doing?

May2016-Apr2017 12 Month Goal	May2016-Apr2017 12 Month Actual		Apr2017 Goal	Apr2017 Actual	
57,132	62,747	↑	4,575	5,891	↑
Attendees	Attendees		Attendees	Attendees	

Preschool Literacy Program Attendance



Good



Attendance by Audience, May 2016 - Apr 2017

