

Hours Not Worked Public Health & Wellness



KPI Owner: Jon Moore

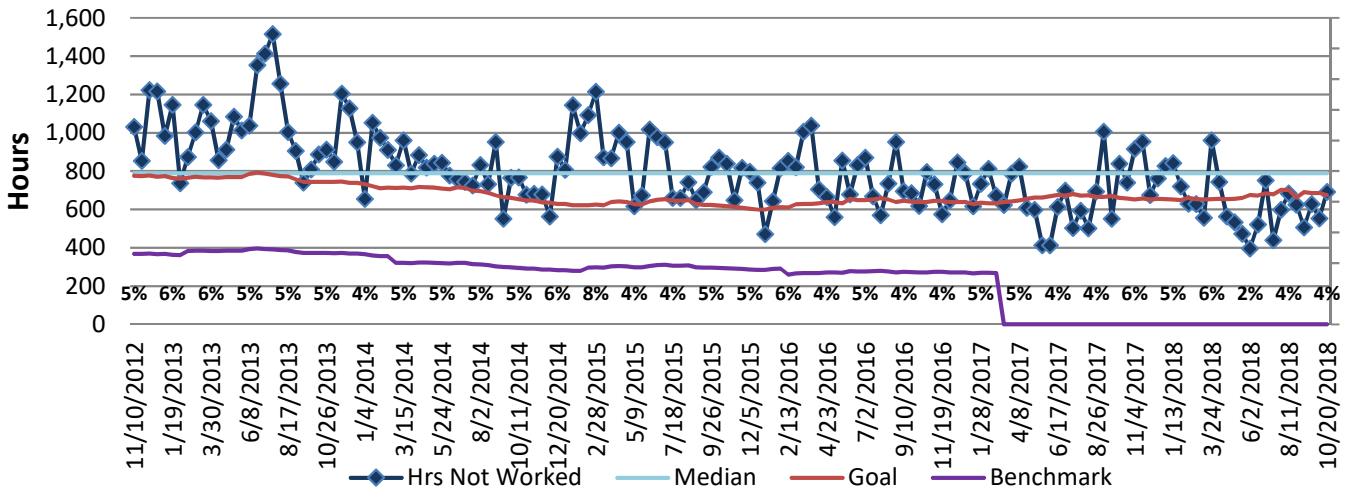
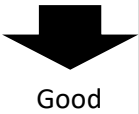
Process:

Baseline, Goal, & Benchmark	Source Summary	Continuous Improvement Summary
Baseline: FY12 monthly average rate of 4.5% Goal: Reduce hours not worked to 4% of the total hours earned in a month by June 30, 2015. Benchmark: Local Government Rate of 1.7%	Data Source: Payable Time PeopleSoft Goal Source: Scope Summary Benchmark Source: Bureau Labor Statistics	Plan-Do-Check-Act Step 8: Monitor and diagnose Measurement Method: Total # of hrs per month employees were not at work performing normal job functions (excludes vacations & holidays), rate calculated by dividing by total standard hours Why Measure: Better understand culture impact on employee attendance Next Improvement Step: Ensure policies are being applied and enforced

How Are We Doing?

10.22.17-10.20.18 12 Month Goal	10.22.17-10.20.18 12 Month Actual		10.07.18-10.20.18 Goal	10.07.18-10.20.18 Actual	
17,330	17,190	🚦	674	691	🚦
Hours	Hours		Hours	Hours	

Hours Not Worked



10.22.17-10.20.18 Pareto Analysis

