

Specimens Not Analyzed Within Designated Timeframe Public Health & Wellness



KPI Owner: Dr. Wolf

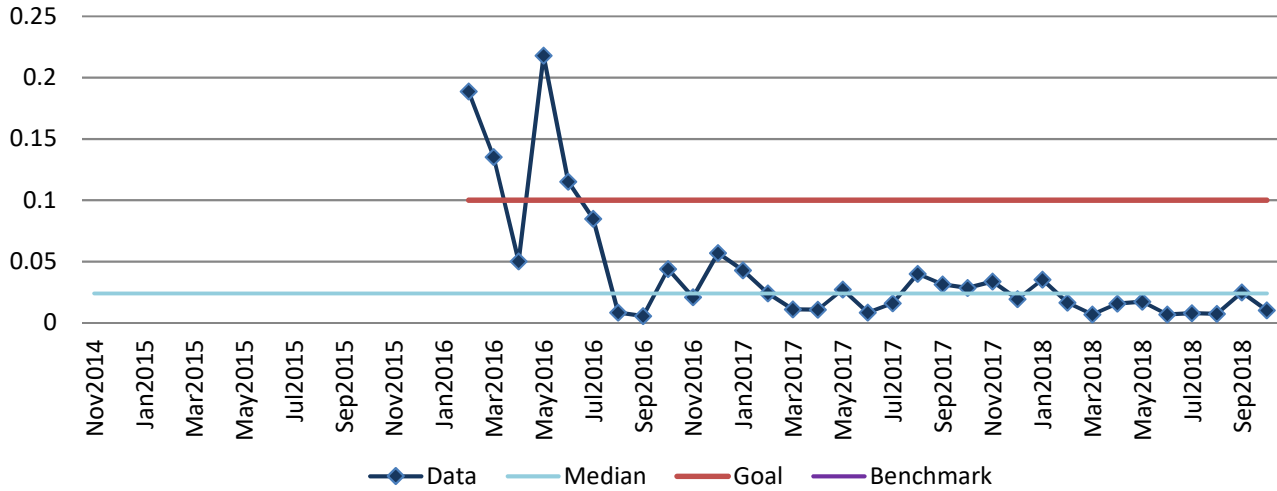
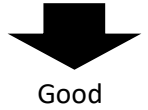
Process: Laboratory

Baseline, Goal, & Benchmark	Source Summary	Continuous Improvement Summary
Baseline: January 2016 - 18.88% Goal: No more than 10% of specimens fall outside the designated window for analysis. Benchmark: TBD	Data Source: Orchard Harvest Goal Source: Executive Leadership Benchmark Source: TBD	Plan-Do-Check-Act Step 8: Monitor and diagnose Measurement Method: Percentage of specimens processed by the lab that fall outside of each tests' designated turnaround time. Why Measure: To ensure containment of outbreaks Next Improvement Step: Continue to monitor

How Are We Doing?

Nov2017-Oct2018 12 Month Goal	Nov2017-Oct2018 12 Month Actual		Oct2018 Goal	Oct2018 Actual	
10%	1.7%		10%	1.02%	
Units	Units		Units	Units	

Specimens Not Analyzed Within Designated Timeframe



Root cause analysis is not necessary because there is no gap between the goal and current performance.