

Outbreak Investigations Not Initiated Timely Public Health & Wellness



KPI Owner: Director of Nursing

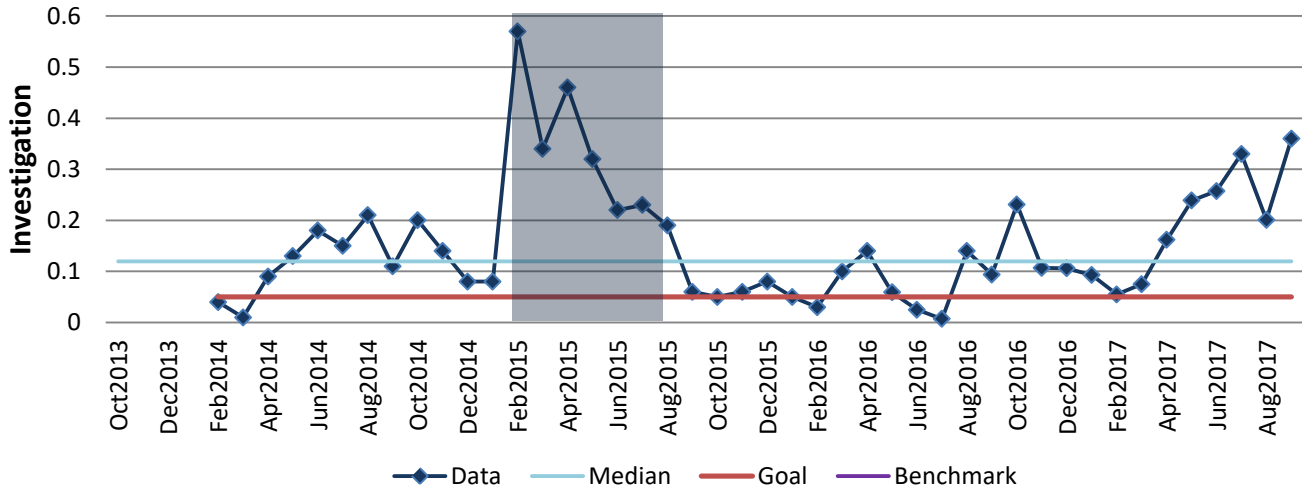
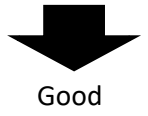
Process: Diagnose and Investigate

Baseline, Goal, & Benchmark	Source Summary	Continuous Improvement Summary
Baseline: CA 2014 avg 11.83% of investigations Goal: No more than 5% of investigations not initiated timely Benchmark: TBD	Data Source: NEDSS Goal Source: Staff & Leadership Benchmark Source: TBD	Plan-Do-Check-Act Step 3: Determine and quantify root causes Measurement Method: Percentage of reportable disease investigations not initiated in 2 business days or less and chronic hepatitis cases not initiated within 5 business days or less Why Measure: To ensure containment of outbreaks Next Improvement Step: Generate potential solutions

How Are We Doing?

Oct2016-Sep2017 12 Month Goal	Oct2016-Sep2017 12 Month Actual		Sep2017 Goal	Sep2017 Actual	
5%	18%		5%	36%	
Investigation	Investigation		Investigation	Investigation	

Outbreak Investigations Not Initiated Timely



Oct2016-Sep2017 Pareto Analysis

