

WIC Participation/Enrollment Ratio Public Health & Wellness



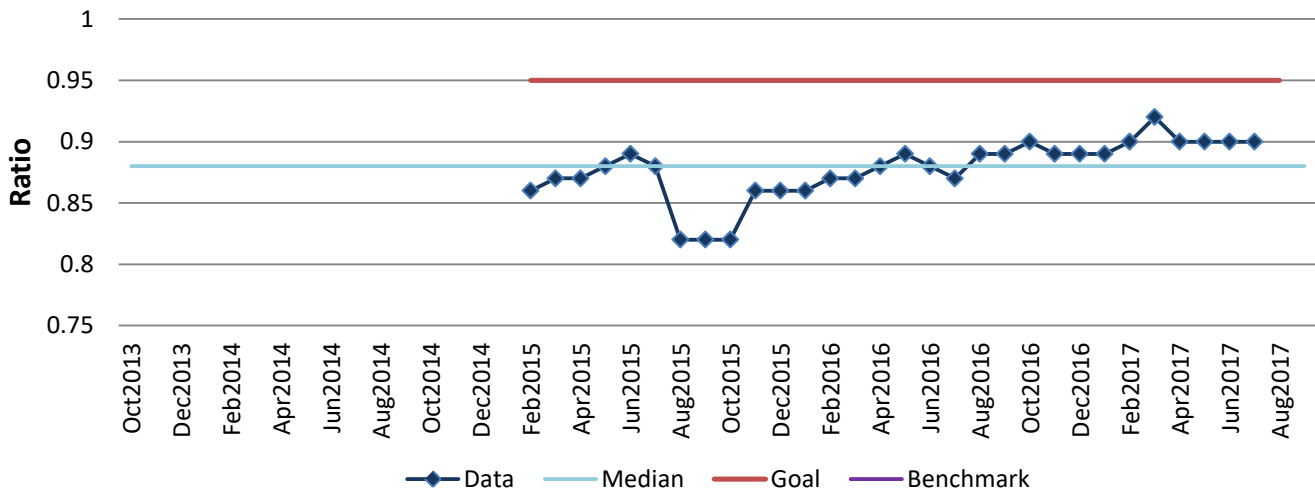
KPI Owner: Director of Community Health and Prevention Process: Inform/Educate/Empower

Baseline, Goal, & Benchmark	Source Summary	Continuous Improvement Summary
Baseline: Jan 2015 - 0.86 Goal: Achieve a 0.95 enrollment-to-participation ratio each month Benchmark: TBD	Data Source: KY WIC program Goal Source: Executive Leadership Benchmark Source: TBD	Plan-Do-Check-Act Step 6: Validate that solutions work Measurement Method: Participation is determined by the state as the number of enrolled individuals who attend scheduled appointments and use their WIC benefits. It is 3 months behind. Why Measure: Ensure we retain participants in the program. Next Improvement Step: Standardize and replicate solutions

How Are We Doing?

Oct2016-Sep2017 12 Month Goal	Oct2016-Sep2017 12 Month Actual		Jul2017 Goal	Jul2017 Actual	
0.95	0.90	⬆️	0.95	0.90	⬆️
Ratio	Ratio		Ratio	Ratio	

WIC Participation/Enrollment Ratio



Oct2016-Sep2017 Pareto Analysis

