

# Hours Lost Due to Work Related Injury/Illness Public Health & Wellness



KPI Owner: Chief of Staff, Jon Moore

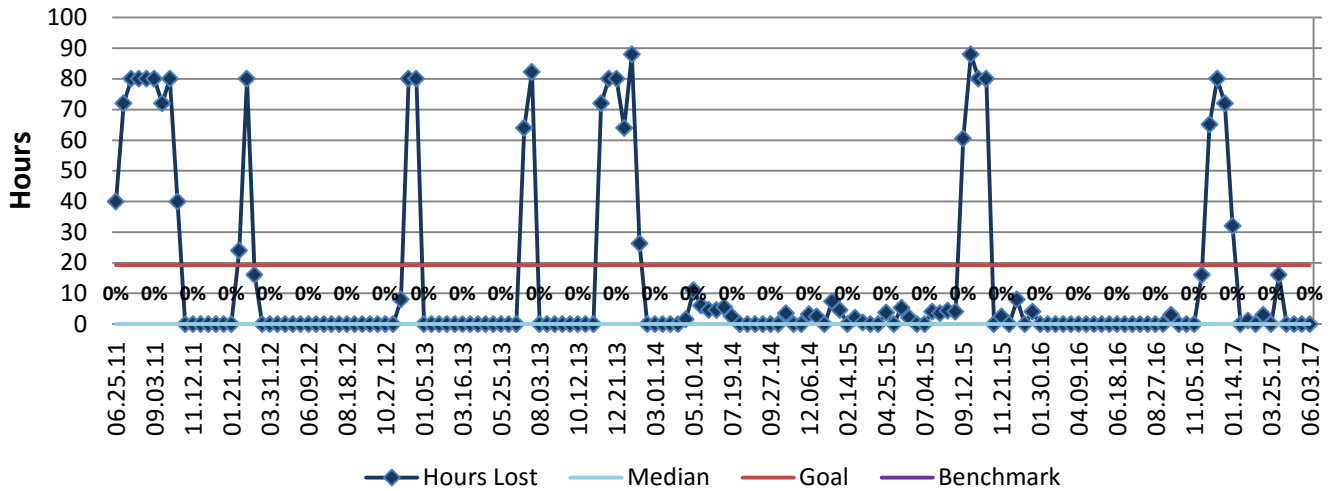
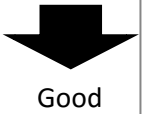
Process: Safety

Baseline, Goal, & Benchmark	Source Summary	Continuous Improvement Summary
Baseline: FY12 - 672 hours Goal: No more than 500 hours lost per year due to work related illness and injury. (19.23 hrs per pay period) Benchmark: Local Government Rate of 0%	Data Source: Payable Time PeopleSoft Goal Source: Scope Summary Benchmark Source: Bureau Labor Statistics	Plan-Do-Check-Act Step 8: Monitor and diagnose Measurement Method: The total number of hours per month employees were absent due to a work place injury or an illness contracted at work, rate calculated by dividing by total standard hours Why Measure: Minimize number & severity of workplace injuries/illness Next Improvement Step: Continue to track and monitor

### How Are We Doing?

06.05.16-06.03.17 12 Month Goal	06.05.16-06.03.17 12 Month Actual		05.21.17-06.03.17 Goal	05.21.17-06.03.17 Actual	
<b>500</b>	<b>288</b>	🚦	<b>19</b>	<b>0</b>	🚦
Hours	Hours		Hours	Hours	

## Hours Lost Due to Work Related Injury/Illness



Root cause analysis is not necessary because there is no gap between the goal and current performance.