

Unsatisfactory Lab Specimens Public Health & Wellness



KPI Owner: Director of Public Health Lab

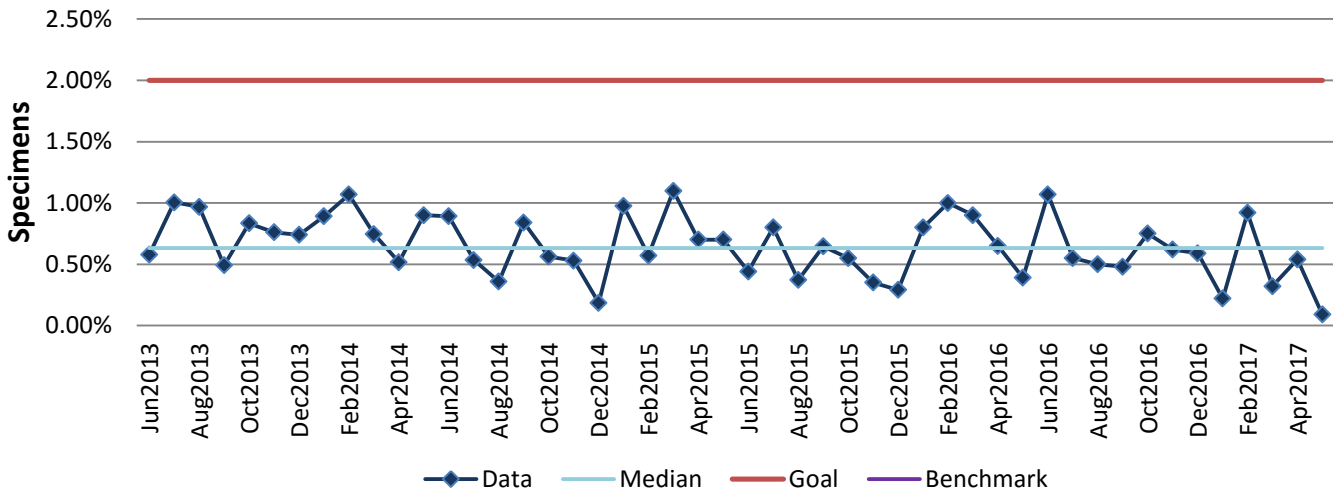
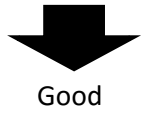
Process: Diagnose and Investigate

Baseline, Goal, & Benchmark	Source Summary	Continuous Improvement Summary
Baseline: Cal2013 - 0.76% unsatisfactory specs Goal: Maintain an unsatisfactory lab specimen percentage at or below 2%. Benchmark: TBD	Data Source: Orchard Harvest Goal Source: Executive Leadership Benchmark Source: TBD	Plan-Do-Check-Act Step 8: Monitor and diagnose Measurement Method: Percentage of lab specimens that are rejected and untested due to poor quality and acceptability. Why Measure: Improve patient care Next Improvement Step: Continue to monitor and diagnose

How Are We Doing?

Jun2016-May2017 12 Month Goal	Jun2016-May2017 12 Month Actual		May2017 Goal	May2017 Actual			
2.00%	0.55%			2.00%		0.09%	
Specimens	Specimens			Specimens		Specimens	

Unsatisfactory Lab Specimens



Root cause analysis is not necessary because there is no gap between the goal and current performance.