

# Hours Lost Due to Work Related Injury/Illness Louisville Metro Police Department



KPI Owner: Cheryl Triplett

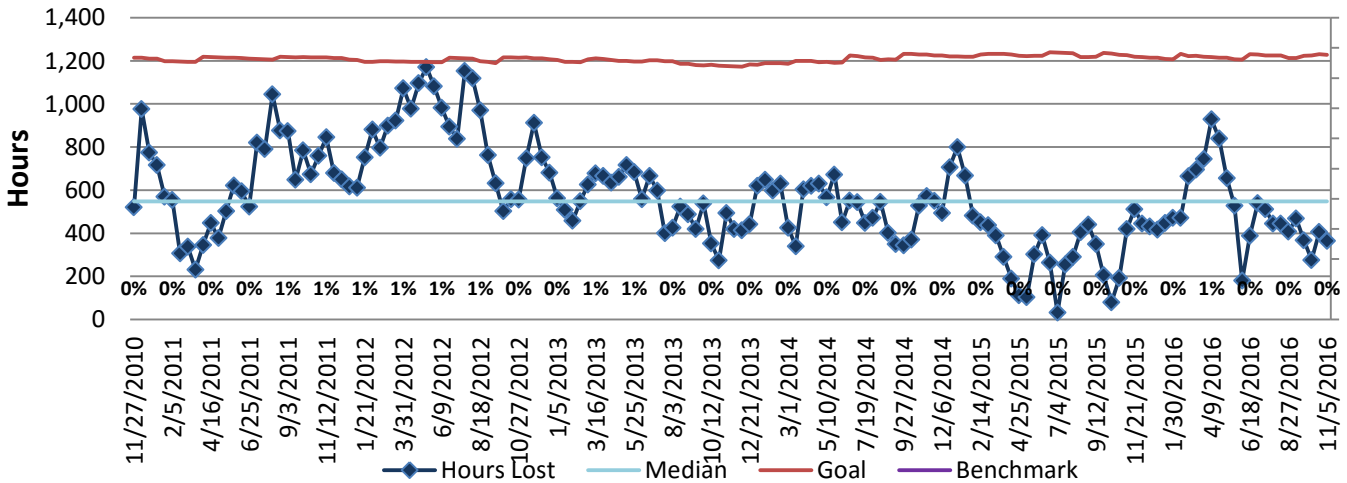
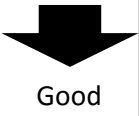
Process: Time and Attendance

Baseline, Goal, & Benchmark	Source Summary	Continuous Improvement Summary
Baseline: CY12, 1% Goal: 1% of Total Opportunities  Benchmark: TBD	Data Source: Payable Time PeopleSoft  Goal Source: Scope Summary  Benchmark Source: TBD	Plan-Do-Check-Act Step 8: Monitor and diagnose Measurement Method: The total number of hours per month employees were absent due to a work place injury or an illness contracted at work, rate calculated by dividing by total standard hours Why Measure: Minimize number & severity of workplace injuries/illness Next Improvement Step: Continue to monitor and diagnose

### How Are We Doing?

11.08.15-11.05.16 12 Month Goal	11.08.15-11.05.16 12 Month Actual		10.23.16-11.05.16 Goal	10.23.16-11.05.16 Actual	
<b>31,700</b>	<b>13,050</b>	🚦	<b>1,227</b>	<b>364</b>	🚦
Hours	Hours		Hours	Hours	

## Hours Lost Due to Work Related Injury/Illness



Root cause analysis is not necessary because there is no gap between the goal and current performance.