

Officer Involved Accidents Louisville Metro Police Department



KPI Owner: Assistant Chief Robert Schroeder

Process: Traffic Safety

Baseline, Goal, & Benchmark	Source Summary	Continuous Improvement Summary
Baseline: TBD Goal: No more than 7 "At Fault" and 15 "Not at Fault" accidents every calendar month Benchmark: TBD	Data Source: LMPD Goal Source: TBD Benchmark Source: N/A	Plan-Do-Check-Act Step 8: Monitor and diagnose Measurement Method: # of officer involved accidents that involve a motor vehicle Why Measure: To ensure that LMPD officers are operating departmental vehicles in a safe manner Next Improvement Step: Continue to monitor and diagnose

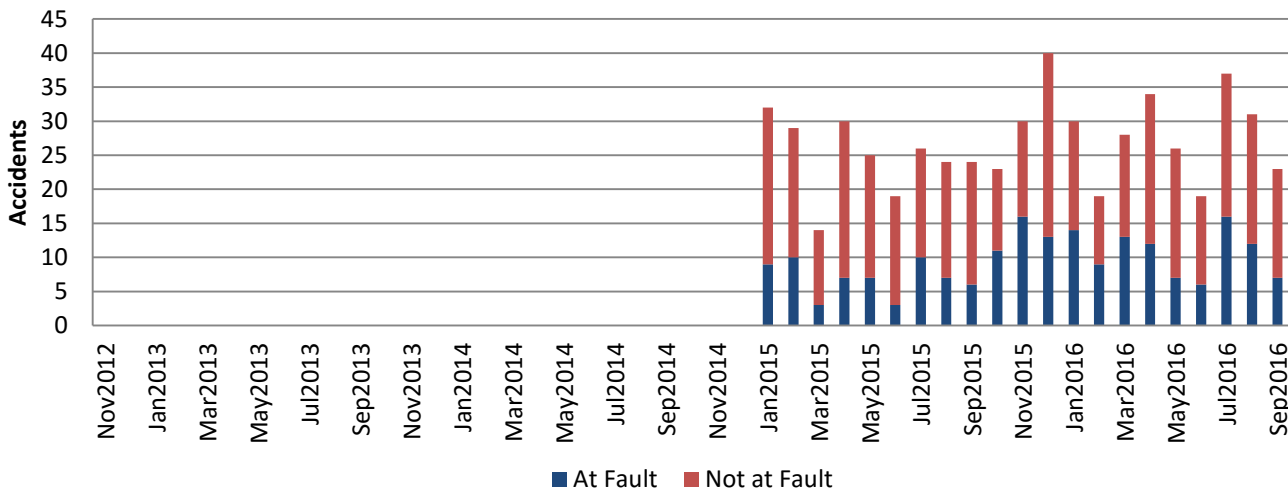
How Are We Doing?

YTD 2016 Goal At Fault Not Fault	YTD 2016 Actual At Fault Not Fault			October 2016 Goal At Fault Not Fault	October 2016 Actual At Fault Not Fault		
70 150	109 178			7 15	7 16		
Accidents	Accidents			Accidents	Accidents		

Officer Involved Accidents



Good



Jan 2016 - Oct 2016: Contributing Factors

