

# UCR Part 1 Property Crime Louisville Metro Police Department



KPI Owner: Assistant Chief Kim Kraeszig

Process: Crime Control

Baseline, Goal, & Benchmark	Source Summary	Continuous Improvement Summary
Baseline: CY12, 28,606 incidents Goal: To reduce Part 1 Crime by 3% each calendar year Benchmark: TBD	Data Source: FBI UCR Report Goal Source: Mayor's Strategic Plan Goal #3A Benchmark Source: N/A	Plan-Do-Check-Act Step 8: Monitor and diagnose Measurement Method: # of UCR Part 1 Property Crimes Why Measure: To ensure the LMPD is directing resources to reduce property crimes and prevent property losses for our citizens and visitors Next Improvement Step: Continue to monitor and diagnose

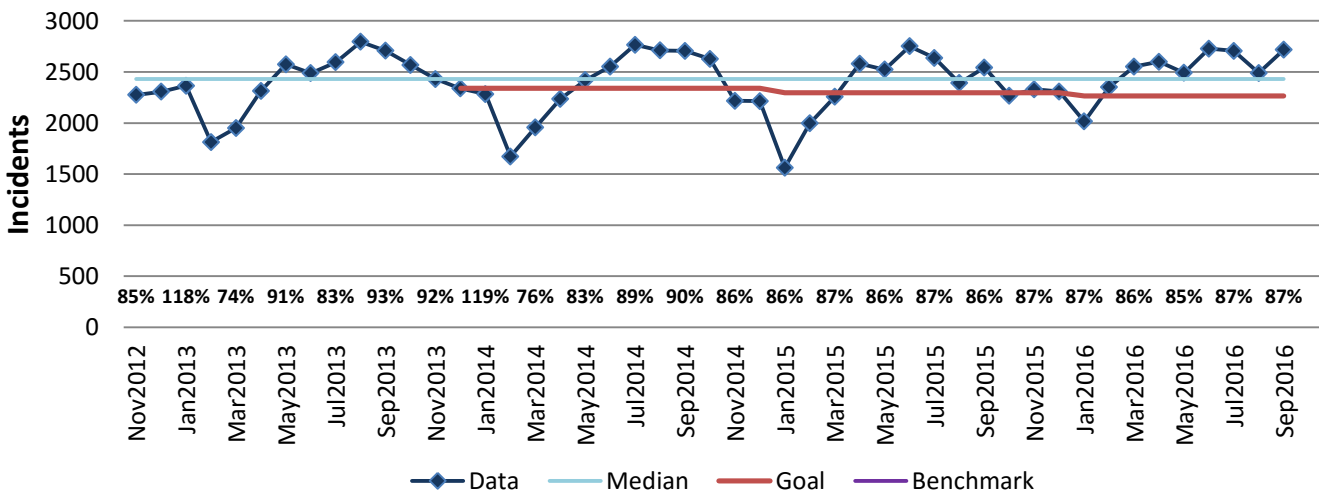
### How Are We Doing?

Oct2015-Sep2016 12 Month Goal	Oct2015-Sep2016 12 Month Actual		Sep2016 Goal	Sep2016 Actual	
<b>27,282</b>	<b>29,561</b>	⚡	<b>2,266</b>	<b>2,717</b>	🚦
<b>Incidents</b>	<b>Incidents</b>		<b>Incidents</b>	<b>Incidents</b>	

## UCR Part 1 Property Crime



Good



## November 2015-October 2016 Property Crime

