

All UCR Part 1 Crime Louisville Metro Police Department



KPI Owner: Assistant Chief Kim Kraeszig

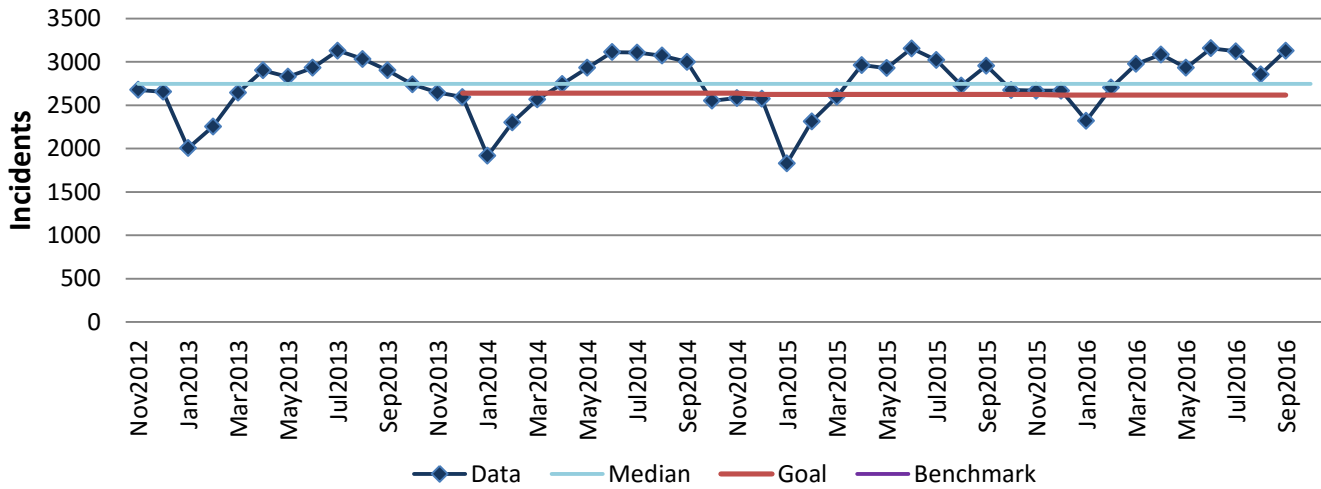
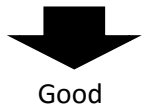
Process: Crime Control

Baseline, Goal, & Benchmark	Source Summary	Continuous Improvement Summary
Baseline: CY12, 32,595 incidents Goal: To reduce Part 1 Crime by 3% each calendar year Benchmark: TBD	Data Source: FBI UCR Report Goal Source: Mayor's Strategic Plan Goal #3A Benchmark Source: TBD	Plan-Do-Check-Act Step 8: Monitor and diagnose Measurement Method: # of UCR Part 1 Crimes Why Measure: To ensure the LMPD is directing resources to reduce crime and ensure the safety of our citizens and visitors Next Improvement Step: Continue to monitor and diagnose

How Are We Doing?

Oct2015-Sep2016 12 Month Goal	Oct2015-Sep2016 12 Month Actual		Sep2016 Goal	Sep2016 Actual	
31,420	34,285		2,617	3,129	
Incidents	Incidents		Incidents	Incidents	

All UCR Part 1 Crime



November 2015- October 2016 UCR Crime

