

# Lost Time Injury Rate (cases with days away from work) Louisville Metro Police Department



KPI Owner: Cheryl Triplett

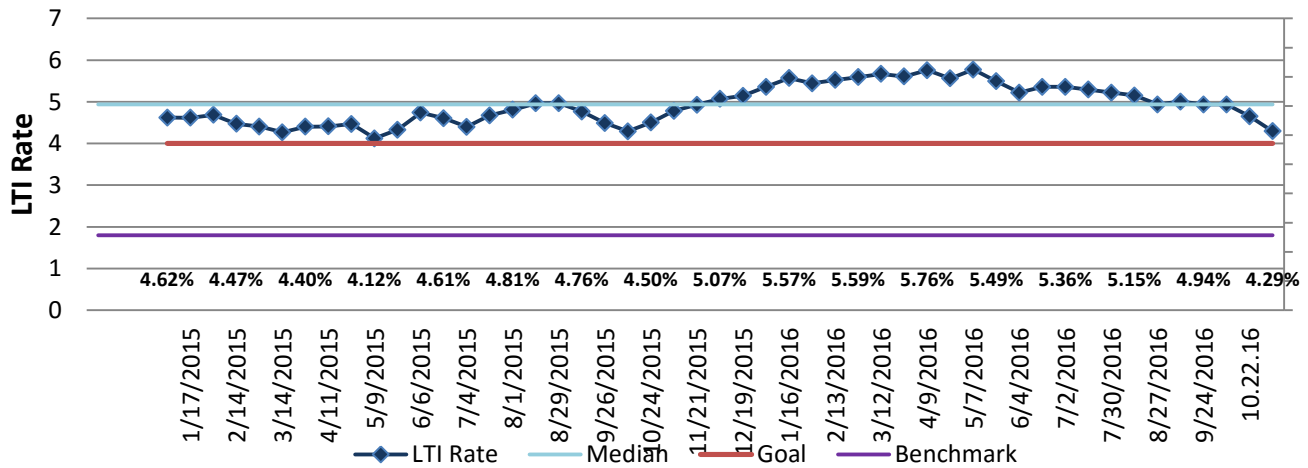
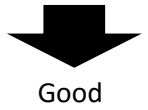
Process: Sick Leave Management

Baseline, Goal, & Benchmark	Source Summary	Continuous Improvement Summary
Baseline: TBD Goal: Rate of no more than 4 per 100  Benchmark: 1.8% all local gov Nov2013	Data Source: OSHA Logs & Payable Time  Goal Source: Scope Summary  Benchmark Source: Bureau Labor Statistics	Plan-Do-Check-Act Step 8: Monitor and diagnose  Measurement Method: In a 12 month period, # of OSHA recordables with lost work days times 200,000 divided by the total # of hours worked  Why Measure: minimize number & severity of workplace injuries/illness  Next Improvement Step: Continue to monitor and diagnose

### How Are We Doing?

11.23.14-11.05.16 Rolling 52wk Avg Goal	11.23.14-11.05.16 Rolling 52wk Avg		11.08.15-11.05.16 Goal	11.08.15-11.05.16 Actual	
<b>4.00</b>	<b>5.26</b>	🚦	<b>4.00</b>	<b>4.29</b>	🚦
LTI Rate	LTI Rate		LTI Rate	LTI Rate	

## Lost Time Injury Rate (cases with days away from work)



### 10.23.15-11.05.16 Pareto Analysis

