

# High Sick Leave Consumption: Sworn Louisville Metro Police Department



KPI Owner: Cheryl Triplett

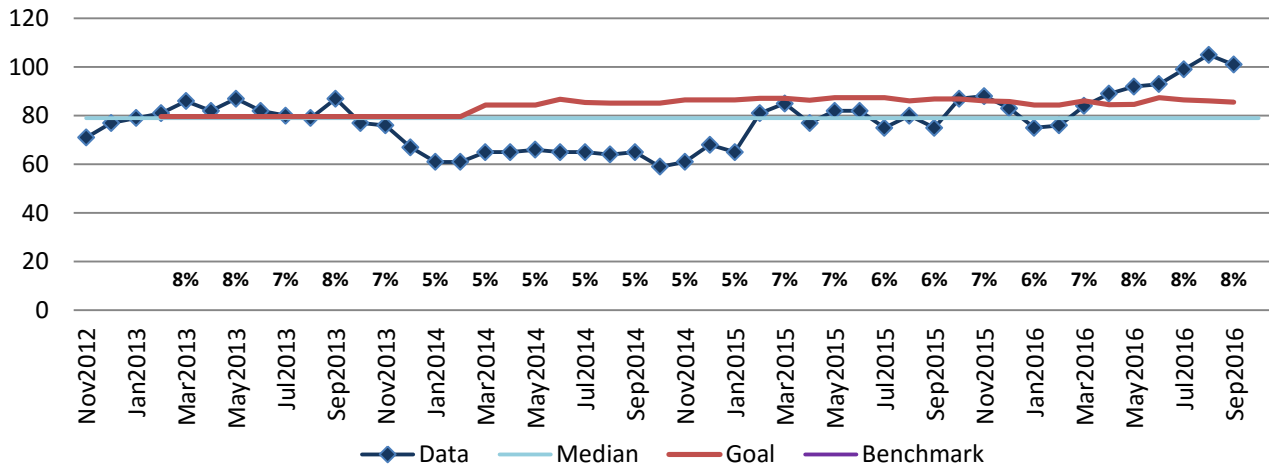
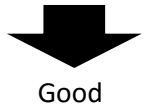
Process: Sick Leave Management

Baseline, Goal, & Benchmark	Source Summary	Continuous Improvement Summary
Baseline: CY12, 76 employees Goal: 7% of Total Opportunities  Benchmark: 8.72% LMG Top Quartile 12/19/15	Data Source: Payable Time PeopleSoft  Goal Source: Scope Summary  Benchmark Source: OPI Sick Leave Study	Plan-Do-Check-Act Step 8: Monitor and diagnose  Measurement Method: # of employees who used 9 or more sick days in a 12 month period  Why Measure: Promote a culture in which sick time is used appropriately  Next Improvement Step: Continue to monitor and diagnose

### How Are We Doing?

Oct2015-Sep2016 12 Month Goal	Oct2015-Sep2016 12 Month Actual		Sep2016 Goal	Sep2016 Actual	
<b>1,028</b>	<b>1,072</b>		<b>86</b>	<b>101</b>	
Employees	Employees		Employees	Employees	

## High Sick Leave Consumption: Sworn



**The seven basic quality tools, "5 Whys" technique, brainstorming and other methods will be applied to the measure graphed above. The purpose of using the tools/methods is to understand what makes performance less than desirable if performance is not best in class.**