

Shootings Louisville Metro Police Department



KPI Owner: Assistant Chief LaVita Chavous

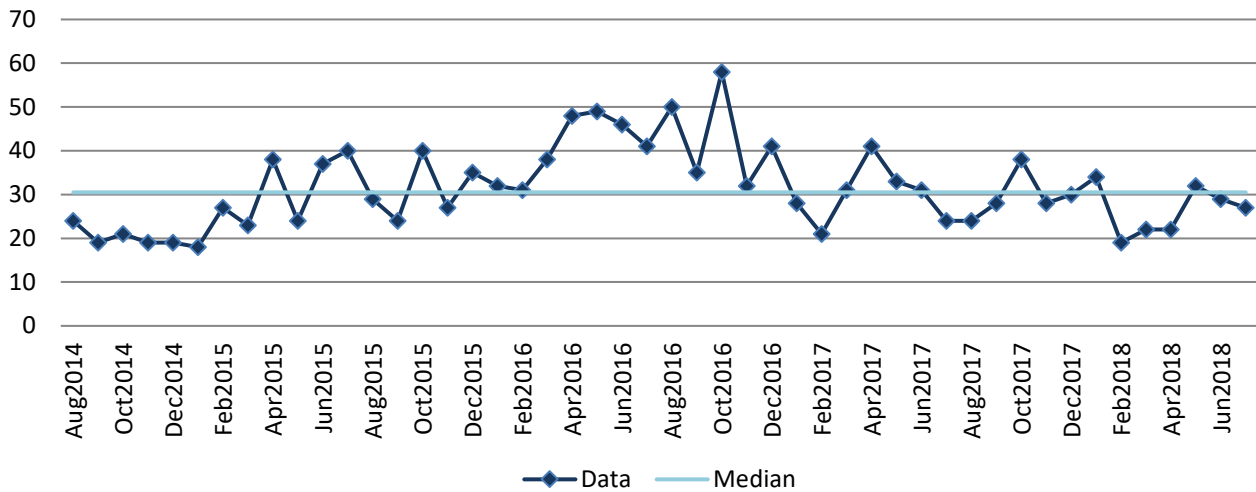
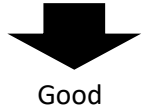
Process: Public Safety

Baseline, Goal, & Benchmark	Source Summary	Continuous Improvement Summary
Baseline: CY13, 226 Goal: To reduce the number of shootings in Metro Louisville Benchmark: N/A	Data Source: FBI UCR Crime Report Goal Source: Mayor's Strategic Plan Goal 1.1 Benchmark Source: N/A	Plan-Do-Check-Act Step 8: Monitor and diagnose Measurement Method: # of shootings that occur in Metro Louisville Why Measure: To ensure LMPD is directing resources to keep citizens and visitors of Metro Louisville safe Next Improvement Step: Continue to monitor and diagnose

How Are We Doing?

Aug2016-Jul2017 12 Month Actual	Aug2017-Jul2018 12 Month Actual		Jul2017 Actual	Jul2018 Actual	
425	333	⬇	24	27	⬆
Shootings	Shootings		Shootings	Shootings	

Shootings



2018 YTD Shootings by Division

