

All UCR Part 1 Crime Louisville Metro Police Department



KPI Owner: Assistant Chief Shara Parks

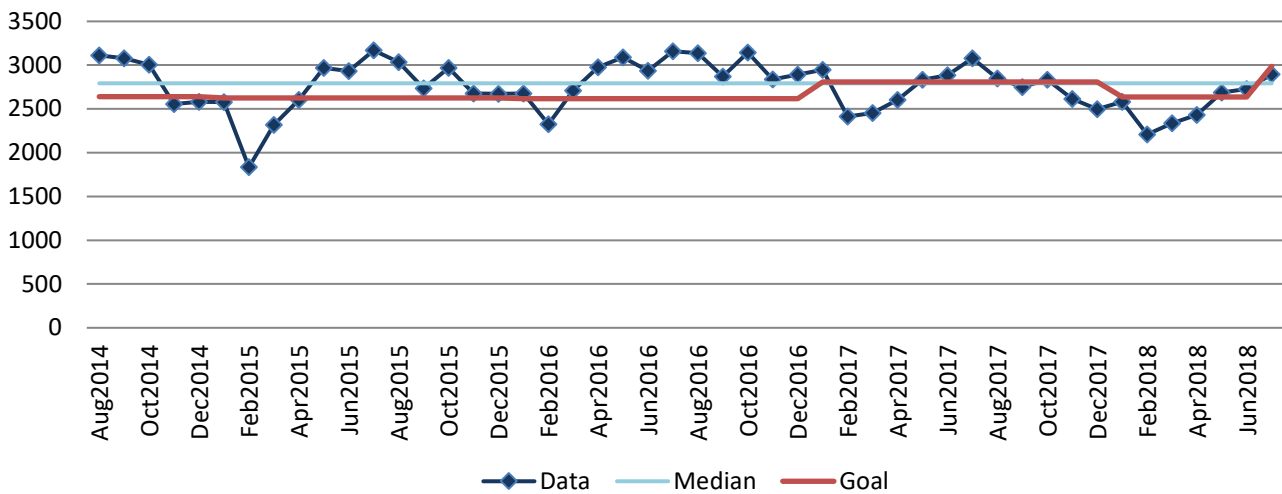
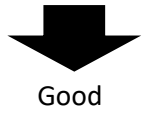
Process: Crime Control

Baseline, Goal, & Benchmark	Source Summary	Continuous Improvement Summary
Baseline: CY12, 32,595 Incidents Goal: To reduce Part 1 Crime by 3% each calendar year Benchmark: TBD	Data Source: FBI UCR Crime Report Goal Source: Mayor's Strategic Plan Goal 1.1 Benchmark Source: TBD	Plan-Do-Check-Act Step 8: Monitor and diagnose Measurement Method: # of UCR Part 1 Crimes Why Measure: To ensure LMPD is directing resources to reduce crime and ensure safety of our citizens and visitors Next Improvement Step: Continue to monitor and diagnose

How Are We Doing?

Aug2017-Jul2018 12 Month Goal	Aug2017-Jul2018 12 Month Actual		Jul2018 Goal	Jul2018 Actual	
32,854	31,416		2,986	2,897	
Crimes	Crimes		Crimes	Crimes	

All UCR Part 1 Crime



All UCR Part 1 Crime August 2017 - July 2018

