

Hours Lost Due to Work Related Injury/Illness Louisville Metro Police Department



KPI Owner: Cheryl Triplett

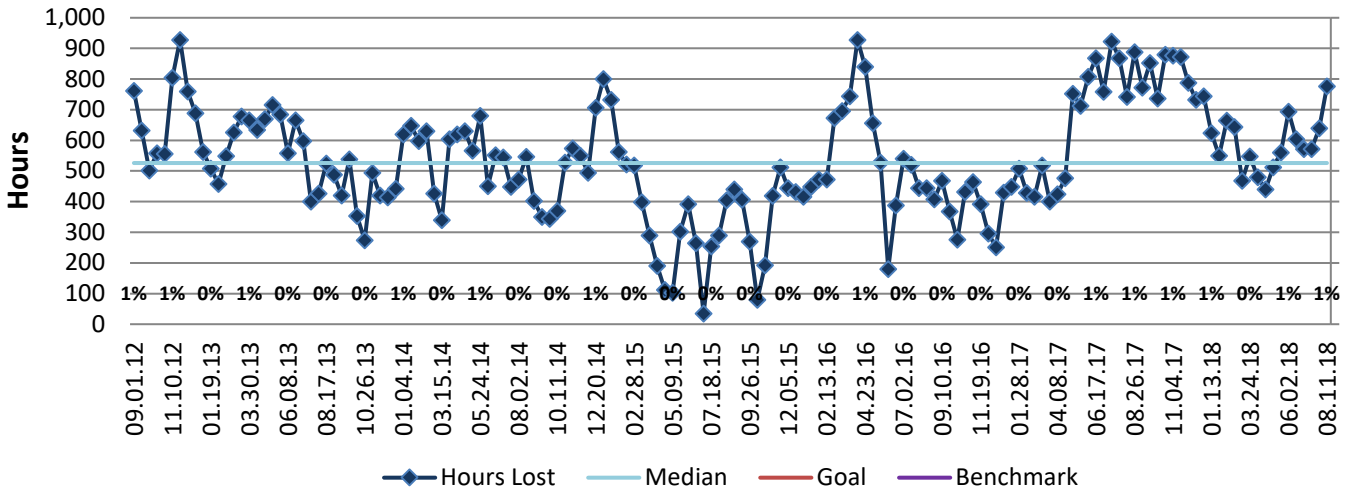
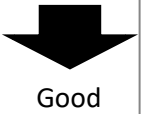
Process: Time and Attendance

Baseline, Goal, & Benchmark	Source Summary	Continuous Improvement Summary
Baseline: CY12, 1% Goal: 1% of Total Opportunities Benchmark: TBD	Data Source: Payable Time PeopleSoft Goal Source: Scope Summary Benchmark Source: TBD	Plan-Do-Check-Act Step 8: Monitor and diagnose Measurement Method: The total number of hours per month employees were absent due to a work place injury or an illness contracted at work, rate calculated by dividing by total standard hours Why Measure: Minimize number & severity of workplace injuries/illness Next Improvement Step: Continue to monitor and diagnose

How Are We Doing?

08.13.17-08.11.18 12 Month Goal	08.13.17-08.11.18 12 Month Actual		07.29.18-08.11.18 Goal	07.29.18-08.11.18 Actual	
33,793	17,487	⬇️	1,264	776	⬆️
Hours	Hours		Hours	Hours	

Hours Lost Due to Work Related Injury/Illness



The seven basic quality tools, "5 Whys" technique, brainstorming and other methods will be applied to the measure graphed above. The purpose of using the tools/methods is to understand what makes performance less than desirable if performance is not best in class.