

# Officer Involved Accidents Louisville Metro Police Department



KPI Owner: Assistant Chief Robert Schroeder

Process: Traffic Safety

Baseline, Goal, & Benchmark	Source Summary	Continuous Improvement Summary
Baseline: TBD Goal: No more than 11 "At Fault" Accidents Benchmark: TBD	Data Source: LMPD Goal Source: LMPD Benchmark Source: N/A	Plan-Do-Check-Act Step 8: Monitor and diagnose Measurement Method: # of officer related accidents that involve a motor vehicle Why Measure: To ensure that LMPD officers are operating departmental vehicles in a safe manner Next Improvement Step: Continue to monitor and diagnose

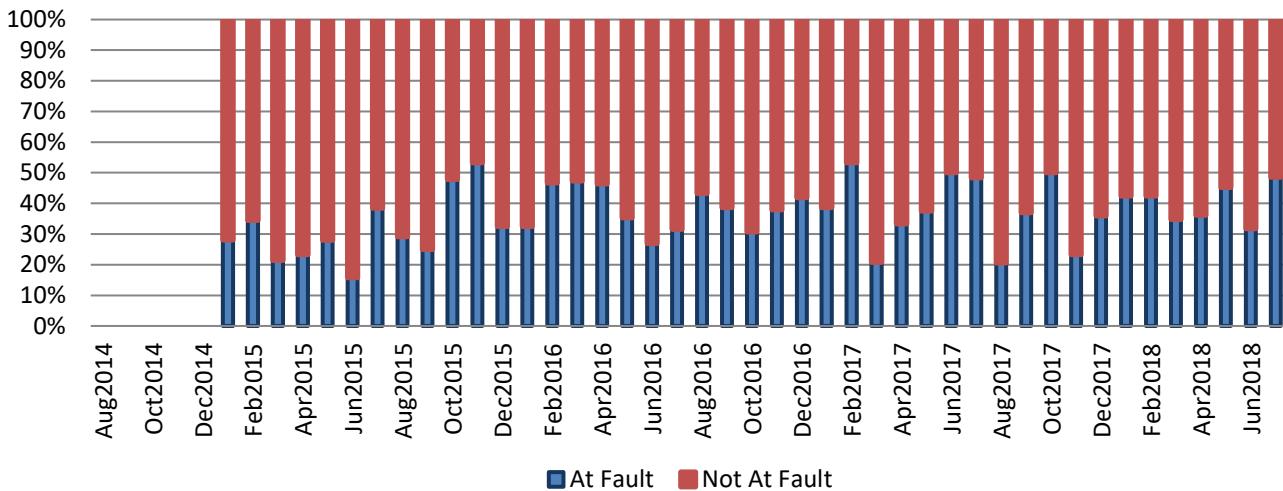
### How Are We Doing?

Aug2017-Jul2018 12 Month Goal	Aug2017-Jul2018 12 Month Actual		Jul2018 Goal	Jul2018 Actual	
<b>132</b>	<b>151</b>	⬇	<b>11</b>	<b>17</b>	⬆
At Fault Accidents	At Fault Accidents		At Fault Accidents	At Fault Accidents	

## Officer Involved Accidents



Good



## 2018 YTD At Fault Accident Contributing Factors

