

# Officer Involved Accidents Louisville Metro Police Department



KPI Owner: Assistant Chief Robert Schroeder

Process: Traffic Safety

Baseline, Goal, & Benchmark	Source Summary	Continuous Improvement Summary
Baseline: TBD Goal: No more than 11 "At Fault" Accidents Benchmark: TBD	Data Source: LMPD Goal Source: LMPD Benchmark Source: N/A	Plan-Do-Check-Act Step 8: Monitor and diagnose Measurement Method: # of officer related accidents that involve a motor vehicle Why Measure: To ensure that LMPD officers are operating departmental vehicles in a safe manner Next Improvement Step: Continue to monitor and diagnose

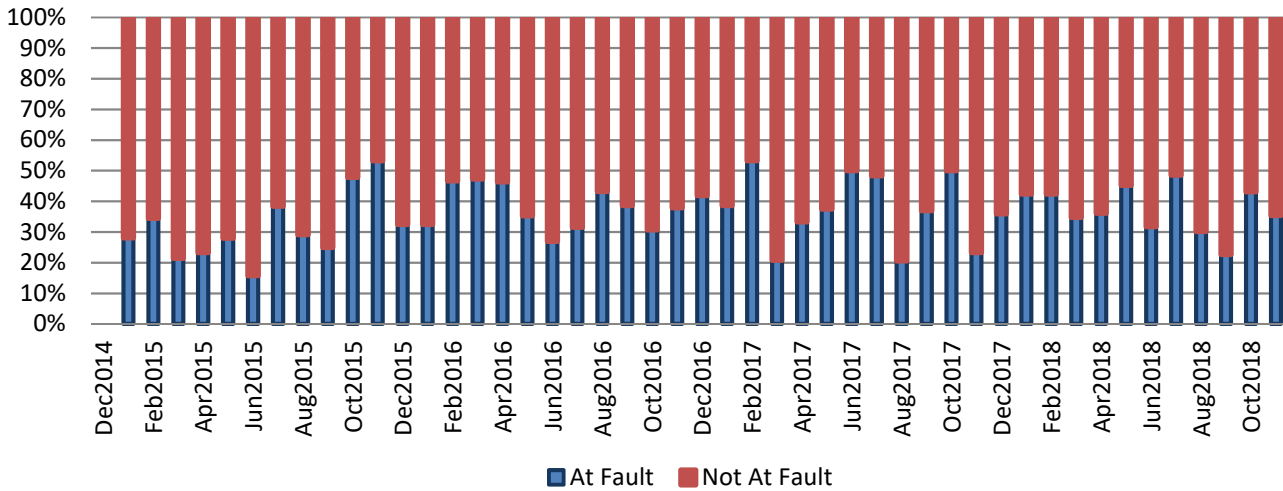
### How Are We Doing?

Dec2017-Nov2018 12 Month Goal	Dec2017-Nov2018 12 Month Actual		Nov2018 Goal	Nov2018 Actual	
<b>132</b>	<b>168</b>		<b>11</b>	<b>17</b>	
At Fault Accidents	At Fault Accidents		At Fault Accidents	At Fault Accidents	

## Officer Involved Accidents



Good



## 2018 YTD At Fault Accidents Contributing Factors

