

# Inmate to Inmate Assaults Louisville Metro Corrections



KPI Owner: Dwayne Clark

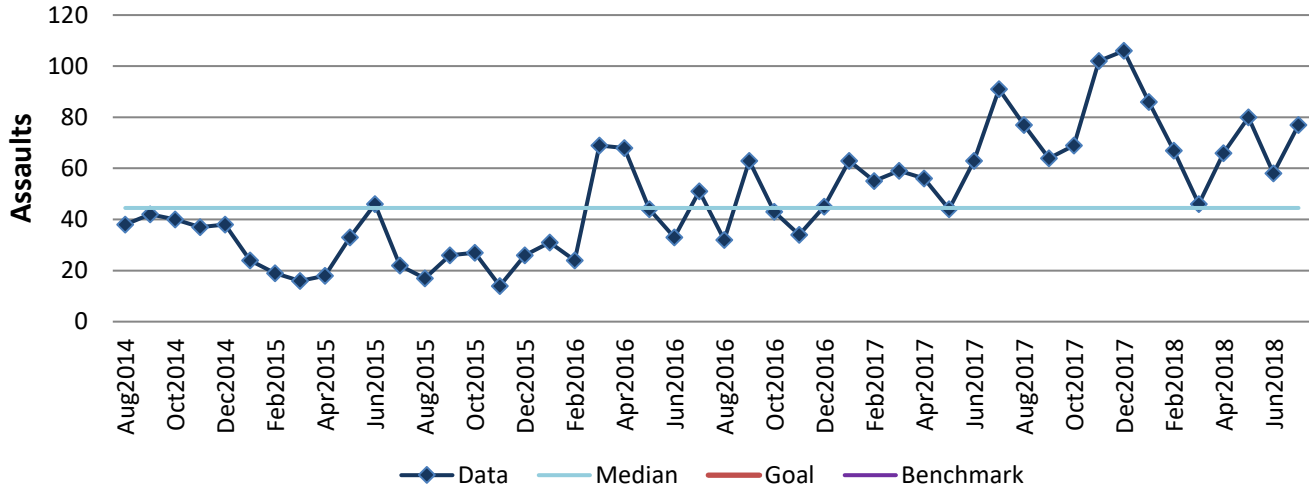
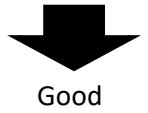
Process: Inmate Management

Baseline, Goal, & Benchmark	Source Summary	Continuous Improvement Summary
Baseline: CY13, 40 average monthly Goal: TBD  Benchmark: N/A	Data Source: Xjail  Goal Source: TBD  Benchmark Source: N/A	Plan-Do-Check-Act Step 2: Validate problem: baseline, benchmark, & goal Measurement Method: Count of inmate to inmate assaults.  Why Measure: Inmate safety and staff increased interpersonal communication skills. Next Improvement Step: Standardize input in Xjail and analyze input options for incidents.

### How Are We Doing?

Aug2017-Jul2018 12 Month Goal	Aug2017-Jul2018 12 Month Actual		Jul2018 Goal	Jul2018 Actual	
<b>TBD</b>	<b>898</b>		<b>TBD</b>	<b>77</b>	
<b>Assaults</b>	<b>Assaults</b>		<b>Assaults</b>	<b>Assaults</b>	

## Inmate to Inmate Assaults



**The seven basic quality tools, "5 Whys" technique, brainstorming and other methods will be applied to the measure graphed above. The purpose of using the tools/methods is to understand what makes performance less than desirable if performance is not best in class.**