

# Hours Not Worked Louisville Metro Corrections



KPI Owner: Dwayne Clark

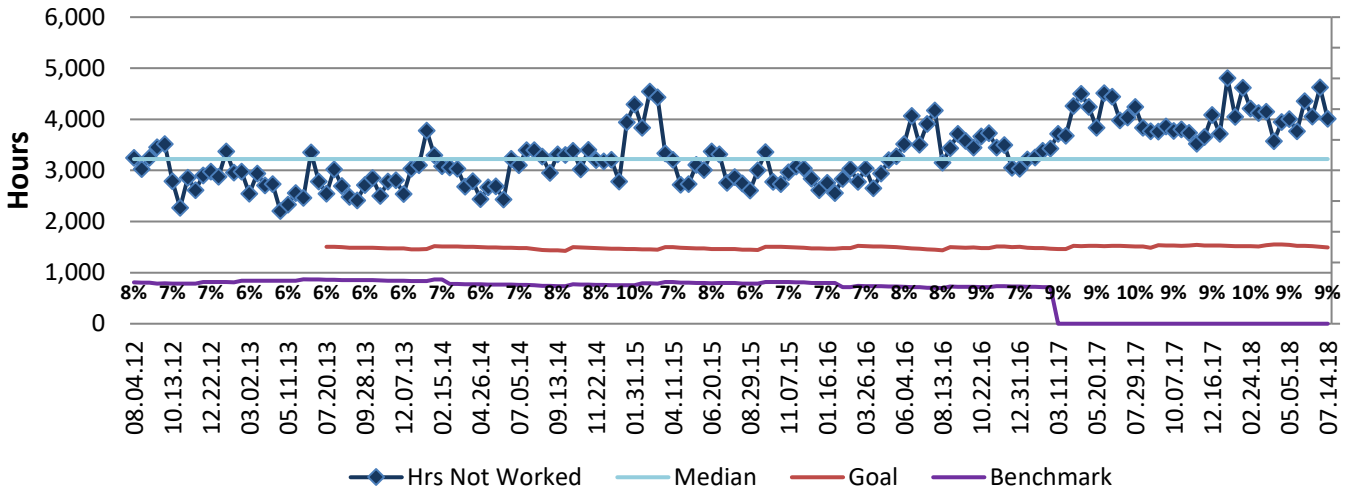
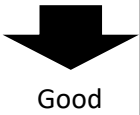
Process: Time & Attendance

Baseline, Goal, & Benchmark	Source Summary	Continuous Improvement Summary
Baseline: CY14, 83,185 Goal: Reduce Hours Not Worked to no more than 3.5% of Total Hours by the end of FY15. Benchmark: Local Government Rate of 1.7%	Data Source: Payable Time PeopleSoft Goal Source: Scope Summary Benchmark Source: Bureau Labor Statistics	Plan-Do-Check-Act Step is Unclear Measurement Method: Total # of hrs per month employees were not at work performing normal job functions (excludes vacations & holidays), rate calculated by dividing by total standard hours Why Measure: Better understand culture impact on employee attendance Next Improvement Step: TBD

## How Are We Doing?

07.16.17-07.14.18 12 Month Goal	07.16.17-07.14.18 12 Month Actual		07.01.18-07.14.18 Goal	07.01.18-07.14.18 Actual	
<b>39,637</b>	<b>104,064</b>	🚦	<b>1,492</b>	<b>4,009</b>	🚦
Hours	Hours		Hours	Hours	

## Hours Not Worked



## 07.16.17-07.14.18 Pareto Analysis

