

Hours Not Worked Louisville Metro Corrections



KPI Owner: Dwayne Clark

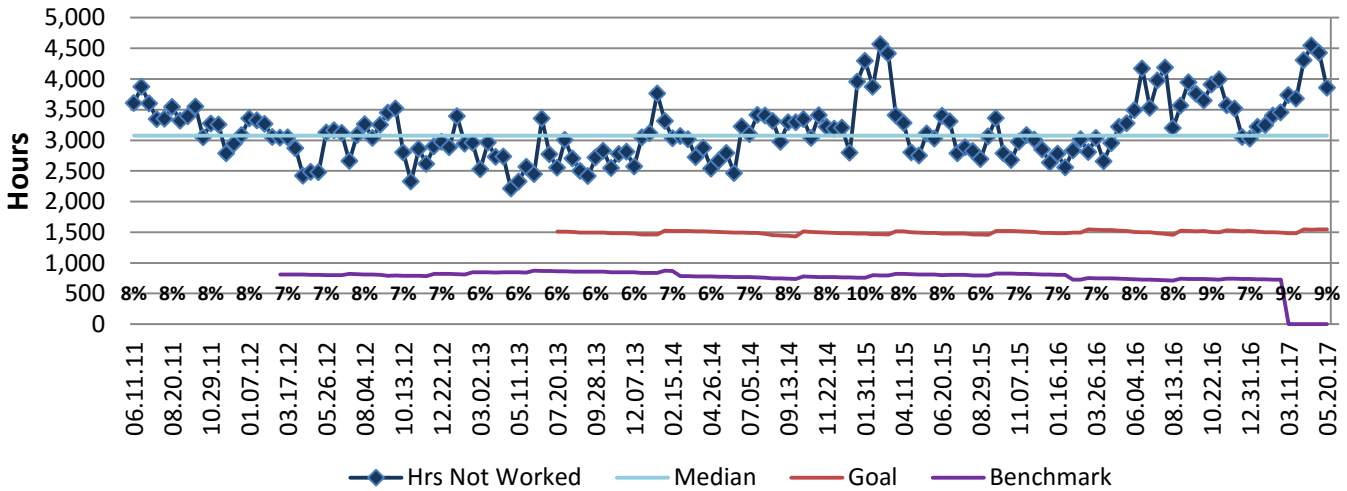
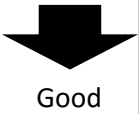
Process: Time & Attendance

Baseline, Goal, & Benchmark	Source Summary	Continuous Improvement Summary
Baseline: CY14, 83,185 Goal: Reduce Hours Not Worked to no more than 3.5% of Total Hours by the end of FY15. Benchmark: Local Government Rate of 1.7%	Data Source: Payable Time PeopleSoft Goal Source: Scope Summary Benchmark Source: Bureau Labor Statistics	Plan-Do-Check-Act Step is Unclear Measurement Method: Total # of hrs per month employees were not at work performing normal job functions (excludes vacations & holidays), rate calculated by dividing by total standard hours Why Measure: Better understand culture impact on employee attendance Next Improvement Step: TBD

How Are We Doing?

05.22.16-05.20.17 12 Month Goal	05.22.16-05.20.17 12 Month Actual		05.07.17-05.20.17 Goal	05.07.17-05.20.17 Actual	
39,234	96,400	⬇	1,546	3,856	⬇
Hours	Hours		Hours	Hours	

Hours Not Worked



05.22.16-05.20.17 Pareto Analysis

