

Release on Recognizance Louisville Metro Corrections



KPI Owner: Eric Troutman

Process:

Baseline, Goal, & Benchmark	Source Summary	Continuous Improvement Summary
Baseline: TBD Goal: Inmates are ROR within 4 hours or less. Goal for defects TBD. Benchmark: TBD	Data Source: Excel Spreadsheet Goal Source: Senior Mgmt Benchmark Source: TBD	Plan-Do-Check-Act Step 2: Validate problem: baseline, benchmark, & goal Measurement Method: Count of inmates who are released over 4 hours (defects) not held on other charges. Why Measure: Standard and expectation from court not to hold inmates longer than necessary. Next Improvement Step: Collect enough data to establish a baseline.

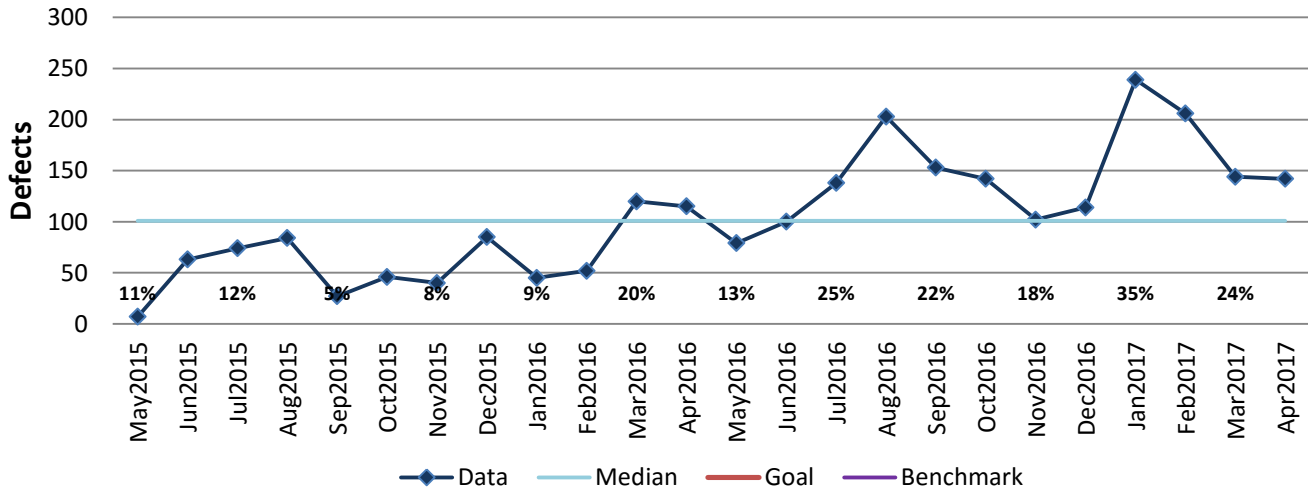
How Are We Doing?

May2016-Apr2017 12 Month Goal	May2016-Apr2017 12 Month Actual		Apr2017 Goal	Apr2017 Actual	
TBD	1,762		TBD	142	
Defects	Defects		Defects	Defects	

Release on Recognizance



Good



May2016-Apr2017 Pareto Analysis

