

Average Daily Population Louisville Metro Corrections



KPI Owner: Mark Bolton

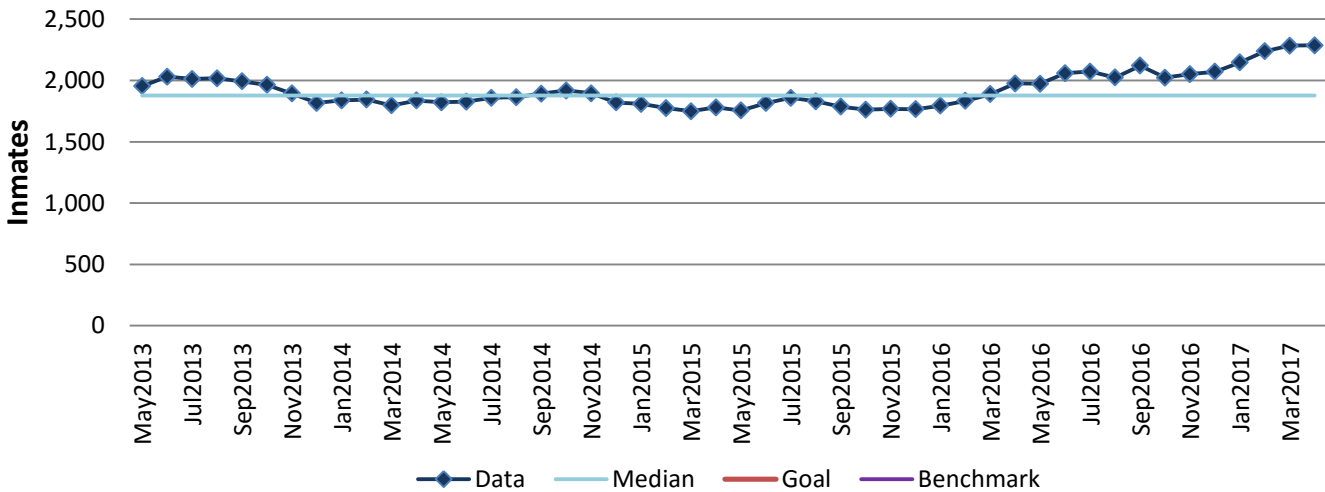
Process: Population Control

Baseline, Goal, & Benchmark	Source Summary	Continuous Improvement Summary
Baseline: ADP of 2,004 inmates in 2012 Goal: N/A- Input Measure Benchmark: N/A	Data Source: Xjail Goal Source: N/A Benchmark Source: N/A	N/A - Input Measure Measurement Method: The average number of inmates held in LMDC's facility each month. Why Measure: To manage offenders in a safe and cost-effective manner. Next Improvement Step: N/A

How Are We Doing?

May2016-Apr2017 12 Month Goal	May2016-Apr2017 12 Month Average		Apr2017 Goal	Apr2017 Actual	
N/A	2,113	⬇	N/A	2,287	⬆
Inmates	Inmates		Inmates	Inmates	

Average Daily Population



Root cause analysis is not applicable for an input measure.