

# Release on Recognizance Louisville Metro Corrections



KPI Owner: Eric Troutman

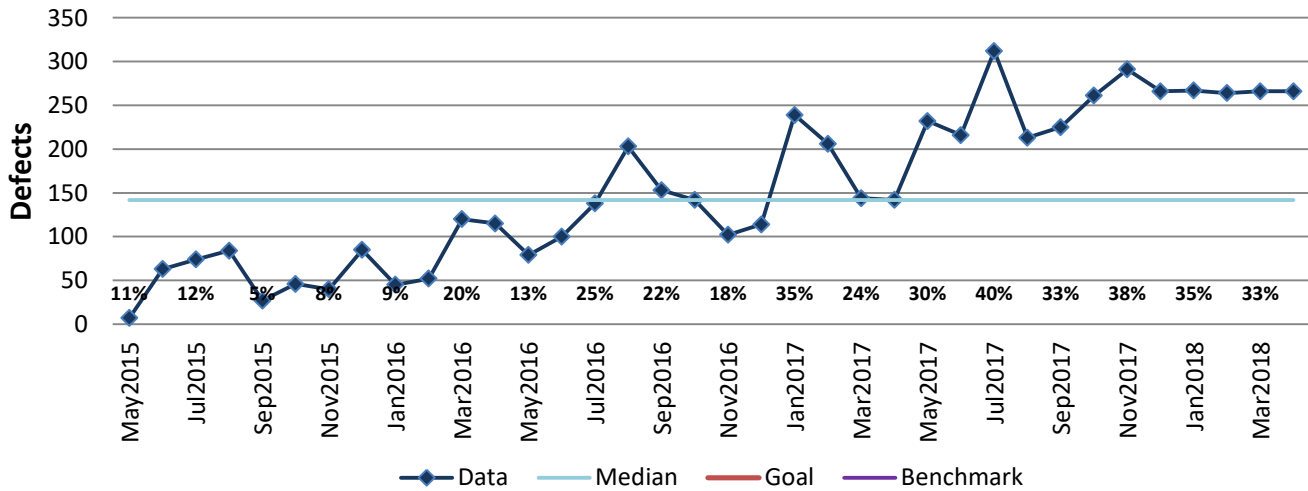
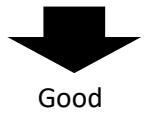
Process: Release

Baseline, Goal, & Benchmark	Source Summary	Continuous Improvement Summary
Baseline: TBD Goal: Inmates are ROR within 4 hours or less. Goal for defects TBD.  Benchmark: TBD	Data Source: Excel Spreadsheet  Goal Source: Senior Mgmt  Benchmark Source: TBD	Plan-Do-Check-Act Step 2: Validate problem: baseline, benchmark, & goal  Measurement Method: Count of inmates who are released over 4 hours (defect) not held on other charge. Why Measure: Standard and expectation from court not to hold inmates longer than necessary. Next Improvement Step: Collect enough data to establish a baseline.

## How Are We Doing?

May2017-Apr2018 12 Month Goal	May2017-Apr2018 12 Month Actual		Apr2018 Goal	Apr2018 Actual	
<b>TBD</b>	<b>3,079</b>		<b>TBD</b>	<b>266</b>	
Defects	Defects		Defects	Defects	

## Release on Recognizance



## May2017-Apr2018 Pareto Analysis

