

# Average Daily Population Louisville Metro Corrections



KPI Owner: Dwayne Clark

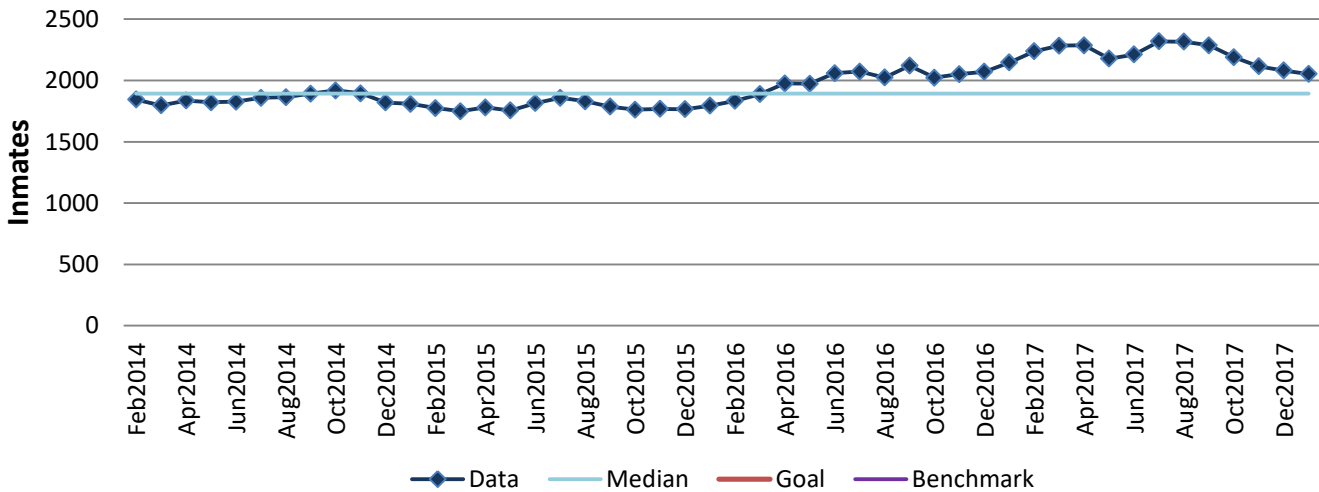
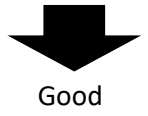
Process: Population Control

| Baseline, Goal, & Benchmark   | Source Summary  | Continuous Improvement Summary  |
|---|---|---|
| Baseline: ADP of 2,004 inmates in 2012.<br>Goal: N/A- Input Measure<br><br>Benchmark: N/A | Data Source: Xjail<br><br>Goal Source: N/A<br><br>Benchmark Source: N/A | N/A - Input Measure<br><br>Measurement Method: The average number of inmates held in LMDC's facility each month.<br><br>Why Measure: To manage offenders in a safe and cost-effective manner.<br>Next Improvement Step: N/A |

### How Are We Doing?

| Feb2017-Jan2018<br>12 Month Goal | Feb2017-Jan2018<br>12 Month Actual |   | Jan2018 Goal   | Jan2018 Actual |   |
|----------------------------------|------------------------------------|---|----------------|----------------|---|
| <b>N/A</b>                       | <b>26,561</b>                      | ⬇ | <b>N/A</b>     | <b>2,053</b>   | ⬆ |
| <b>Inmates</b>                   | <b>Inmates</b>                     |   | <b>Inmates</b> | <b>Inmates</b> |   |

## Average Daily Population



Root cause analysis is not applicable for an input measure.