

Release on Recognizance Louisville Metro Corrections



KPI Owner: Eric Troutman

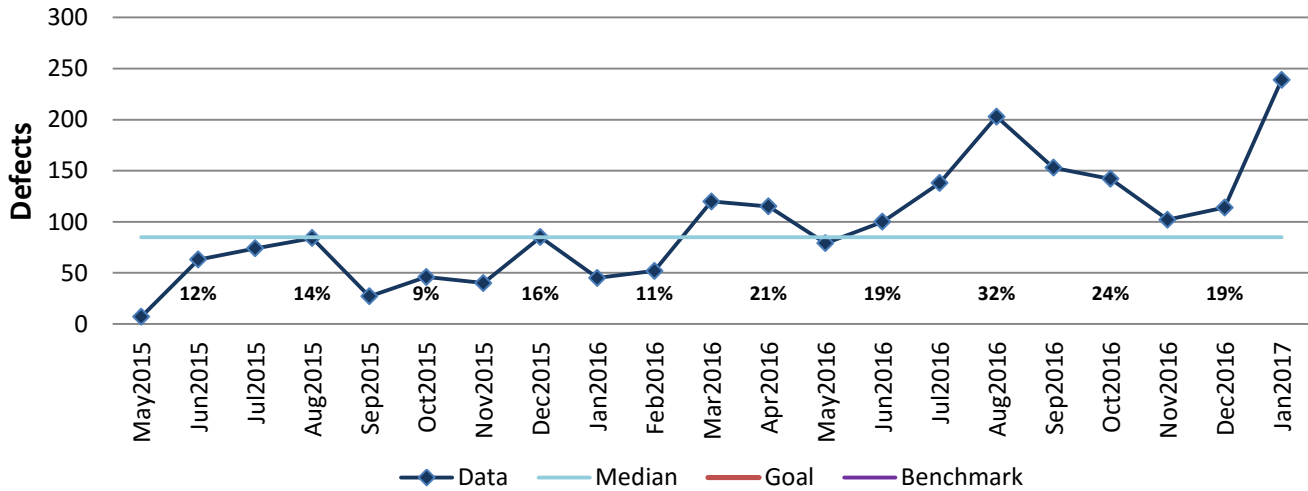
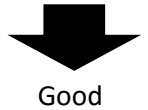
Process: Release

Baseline, Goal, & Benchmark	Source Summary	Continuous Improvement Summary
Baseline: TBD Goal: Inmates are ROR within 4 hours or less. Goal for defects TBD. Benchmark: TBD	Data Source: Excel Spreadsheet Goal Source: Senior Mgmt Benchmark Source: TBD	Plan-Do-Check-Act Step 2: Validate problem: baseline, benchmark, & goal Measurement Method: Count of inmates who are released over 4 hours (defects) not held on other charges. Why Measure: Standard and expectation from court not to hold inmates longer than necessary. Next Improvement Step: Collect enough data to establish a baseline.

How Are We Doing?

Feb2016-Jan2017 12 Month Goal	Feb2016-Jan2017 12 Month Actual		Jan2017 Goal	Jan2017 Actual	
TBD	1,557	⚡	TBD	239	⚡
Defects	Defects		Defects	Defects	

Release on Recognizance



Feb2016-Jan2017 Pareto Analysis

