

Hours Not Worked Louisville Metro Corrections



KPI Owner: Dwayne Clark

Process: Time & Attendance

Baseline, Goal, & Benchmark	Source Summary	Continuous Improvement Summary
Baseline: CY14, 83,185 Goal: Reduce Hours Not Worked to no more than 3.5% of Total Hours by the end of FY15. Benchmark: Local Government Rate of 1.7%	Data Source: Payable Time PeopleSoft Goal Source: Scope Summary Benchmark Source: Bureau Labor Statistics	Plan-Do-Check-Act Step is Unclear Measurement Method: Total # of hrs per month employees were not at work performing normal job functions (excludes vacations & holidays), rate calculated by dividing by total standard hours Why Measure: Better understand culture impact on employee attendance Next Improvement Step: TBD

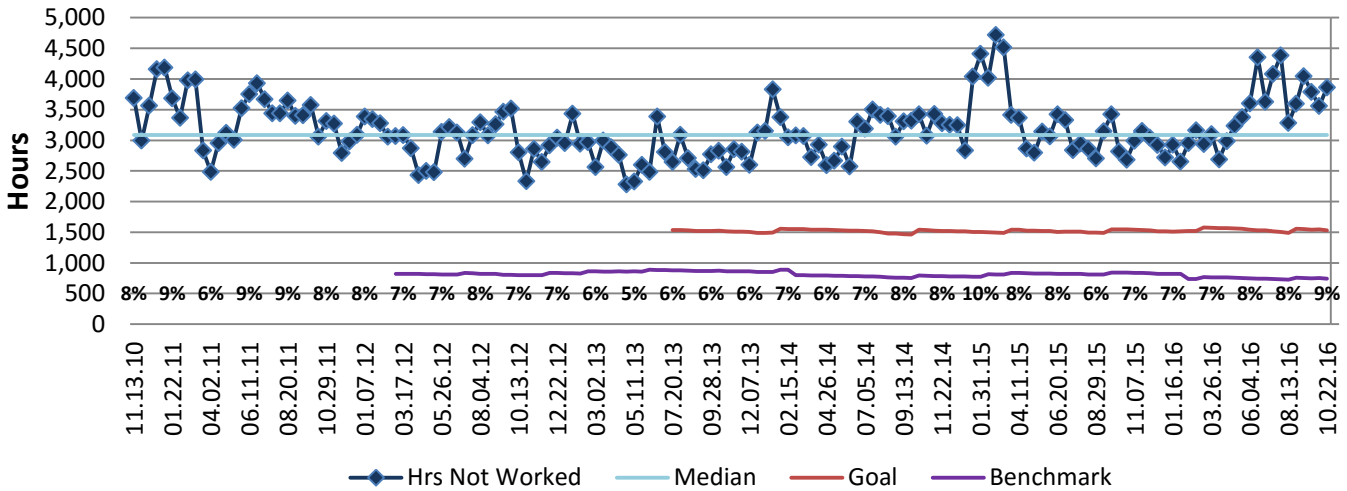
How Are We Doing?

10.25.15-10.22.16 12 Month Goal	10.25.15-10.22.16 12 Month Actual		10.09.16-10.22.16 Goal	10.09.16-10.22.16 Actual	
39,934	87,012		1,532	3,860	
Hours	Hours		Hours	Hours	

Hours Not Worked



Good



10.25.15-10.22.16 Pareto Analysis

