

# Average Daily Population Louisville Metro Corrections



KPI Owner: Mark Bolton

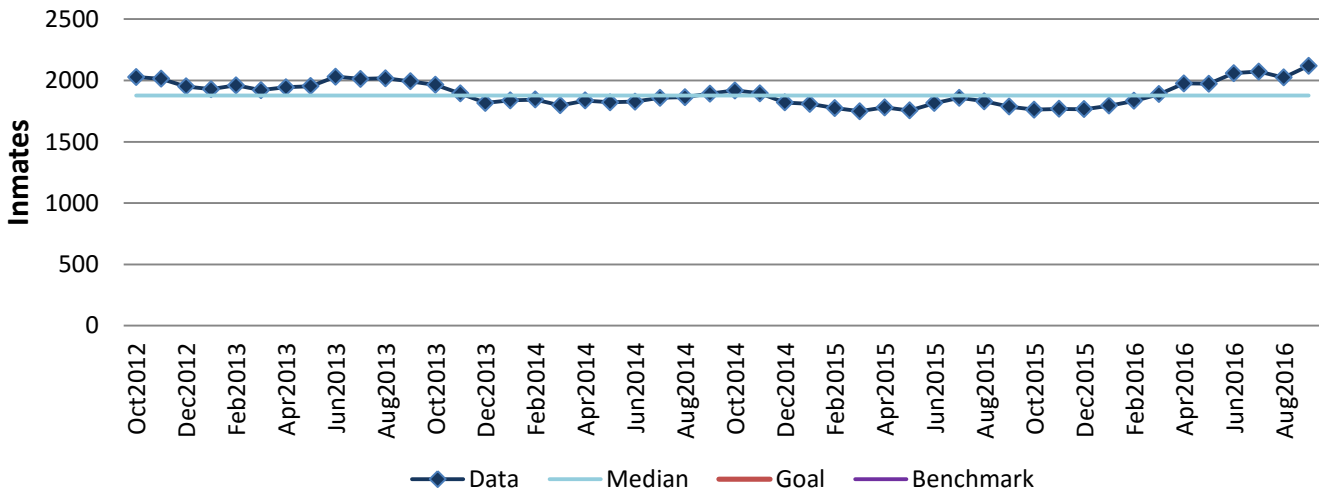
Process: Population Control

Baseline, Goal, & Benchmark	Source Summary	Continuous Improvement Summary
Baseline: ADP of 2,004 inmates in 2012 Goal: N/A- Input Measure  Benchmark: N/A	Data Source: Xjail  Goal Source: N/A  Benchmark Source: N/A	N/A - Input Measure  Measurement Method: The average number of inmates held in LMDC's facility each month.  Why Measure: To manage offenders in a safe and cost-effective manner. Next Improvement Step: N/A

### How Are We Doing?

Oct2015-Sep2016 12 Month Goal	Oct2015-Sep2016 12 Month Actual		Sep2016 Goal	Sep2016 Actual	
N/A	23,037		N/A	2,120	
Inmates	Inmates		Inmates	Inmates	

## Average Daily Population



Root cause analysis is not applicable for an input measure.