

# Turnover Rate Excluding Temporary and Seasonal Louisville Metro Corrections



KPI Owner: Kendra Robinson

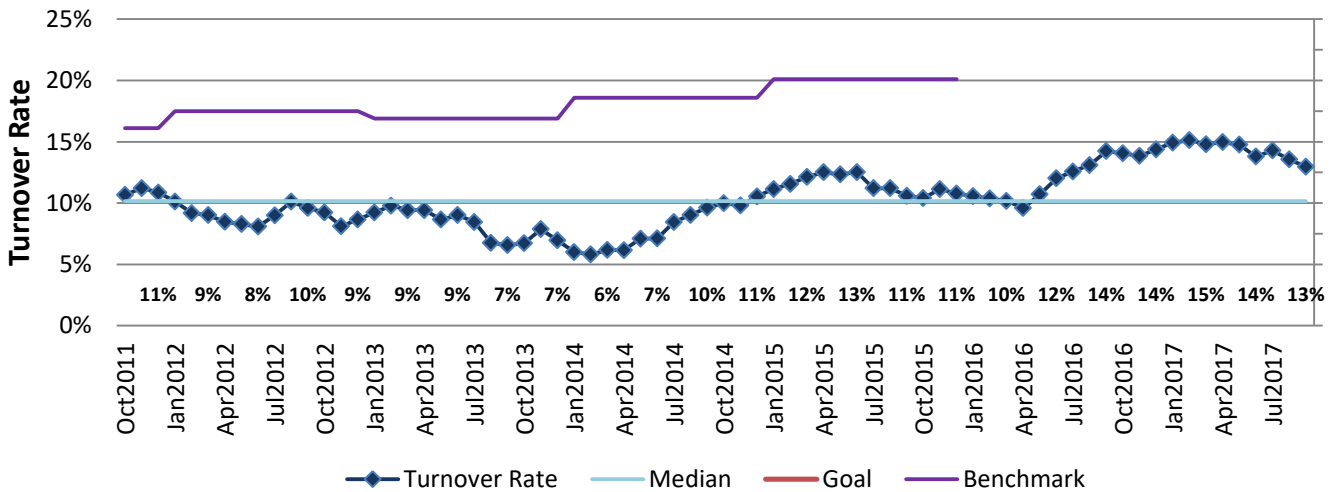
Process: Turnover & Retention

Baseline, Goal, & Benchmark	Source Summary	Continuous Improvement Summary
Baseline: TBD Goal: TBD  Benchmark: 20.1% state/local gov 2015	Data Source: PeopleSoft  Goal Source: TBD  Benchmark Source: Bureau Labor Statistics	Plan-Do-Check-Act Step 1: Define the problem  Measurement Method: # of emps who left Metro (excluding temporary or seasonal) in a 12 month period divided by the avg # of emps  Why Measure: Better understand cultural impact on staff retention  Next Improvement Step: TBD

## How Are We Doing?

Oct2016-Sep2017 12 Month Goal	Oct2016-Sep2017 12 Month Avg		Sep2017 Goal	Sep2017 Actual	
<b>TBD</b>	<b>14%</b>		<b>TBD</b>	<b>13%</b>	
Turnover Rate	Turnover Rate		Turnover Rate	Turnover Rate	

## Turnover Rate Excluding Temporary and Seasonal



## Oct2016-Sep2017 Pareto Analysis

