

# Lost Time Injury Rate (cases with days away from work) Louisville Metro Corrections



KPI Owner: Dwayne Clark

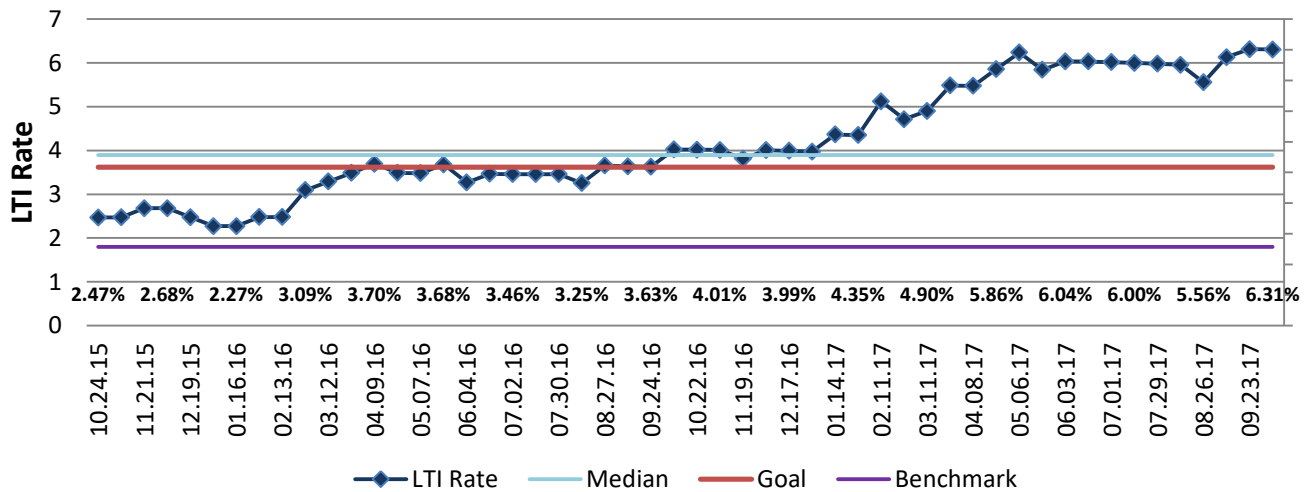
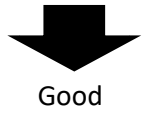
Process: Safety Management

| Baseline, Goal, & Benchmark   | Source Summary   | Continuous Improvement Summary   |
|---|--|--|
| Baseline: CY14, 3.62<br>Goal: Below CY14 Baseline.<br><br>Benchmark: 1.8% all local gov Nov2013 | Data Source: OSHA Logs & Payable Time<br><br>Goal Source: Scope Summary<br><br>Benchmark Source: Bureau Labor Statistics | Plan-Do-Check-Act Step 1: Define the problem<br><br>Measurement Method: In a 12 month period, # of OSHA recordables with lost work days times 200,000 divided by the total # of hours worked<br><br>Why Measure: minimize number & severity of workplace injuries/illness<br><br>Next Improvement Step: Collect data, validate the problem, determine benchmark, and set the goal. |

### How Are We Doing?

| 10.25.15-10.07.17<br>Rolling 52wk Avg Goal | 10.25.15-10.07.17<br>Rolling 52wk Avg |  | 10.09.16-10.07.17 Goal | 10.09.16-10.07.17 Actual |  |
|--|---------------------------------------|--|------------------------|--------------------------|--|
| <b>3.62</b>                                | <b>5.25</b>                           |  | <b>3.62</b>            | <b>6.31</b>              |  |
| LTI Rate                                   | LTI Rate                              |  | LTI Rate               | LTI Rate                 |  |

## Lost Time Injury Rate (cases with days away from work)



### 10.09.16-10.07.17 Pareto Analysis

