

# Hours Lost Due to Work Related Injury/Illness Louisville Metro Corrections



KPI Owner: Dwayne Clark

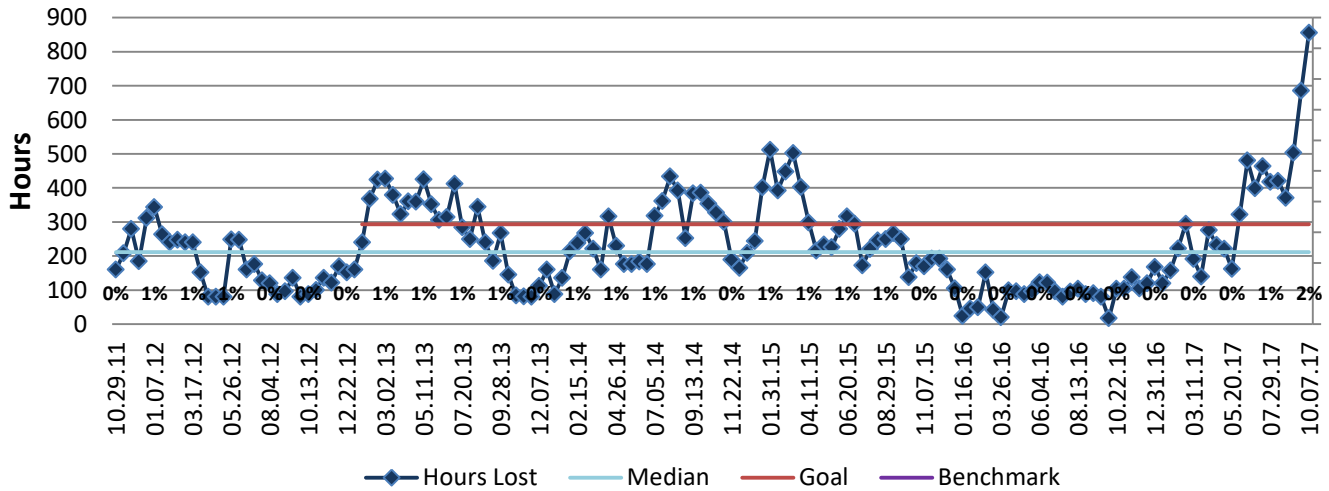
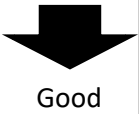
Process: Safety Management

Baseline, Goal, & Benchmark	Source Summary	Continuous Improvement Summary
Baseline: CY14, 6,795 Goal: Reduce the number of Hours Lost Due to Work Related Illness & Injury to no more than 293 hours per bi-weekly period (based on 2015 average). Benchmark: TBD	Data Source: Payable Time PeopleSoft Goal Source: Scope Summary Benchmark Source: TBD	Plan-Do-Check-Act Step is Unclear Measurement Method: The total number of hours per month employees were absent due to a work place injury or an illness contracted at work, rate calculated by dividing by total standard hours Why Measure: Minimize number & severity of workplace injuries/illness Next Improvement Step: Analyze the data to determine root causes of time away from work.

### How Are We Doing?

10.09.16-10.07.17 12 Month Goal	10.09.16-10.07.17 12 Month Actual		09.24.17-10.07.17 Goal	09.24.17-10.07.17 Actual	
<b>7,618</b>	<b>7,677</b>	⬇	<b>293</b>	<b>856</b>	⬇
Hours	Hours		Hours	Hours	

## Hours Lost Due to Work Related Injury/Illness



**The seven basic quality tools, "5 Whys" technique, brainstorming and other methods will be applied to the measure graphed above. The purpose of using the tools/methods is to understand what makes performance less than desirable if performance is not best in class.**