

Release on Recognizance Louisville Metro Corrections



KPI Owner: Eric Troutman

Process: Release

Baseline, Goal, & Benchmark	Source Summary	Continuous Improvement Summary
Baseline: TBD Goal: Inmates are ROR within 4 hours or less. Goal for defects TBD. Benchmark: TBD	Data Source: Excel Spreadsheet Goal Source: Senior Mgmt Benchmark Source: TBD	Plan-Do-Check-Act Step 2: Validate problem: baseline, benchmark, & goal Measurement Method: Count of inmates who are released over 4 hours (defect) not held on other charge. Why Measure: Standard and expectation from court not to hold inmates longer than necessary. Next Improvement Step: Collect enough data to establish a baseline.

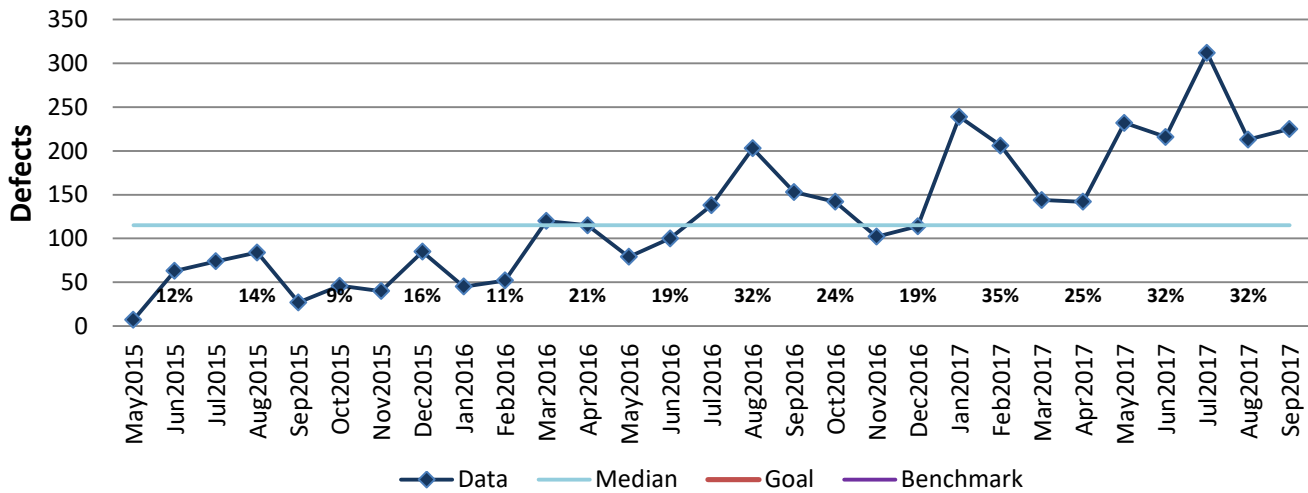
How Are We Doing?

Oct2016-Sep2017 12 Month Goal	Oct2016-Sep2017 12 Month Actual		Sep2017 Goal	Sep2017 Actual	
TBD	2,287		TBD	225	
Defects	Defects		Defects	Defects	

Release on Recognizance



Good



Oct2016-Sep2017 Pareto Analysis

