

# Hours Lost Due to Work Related Injury/Illness Codes & Regulations



KPI Owner: Debbie Howell

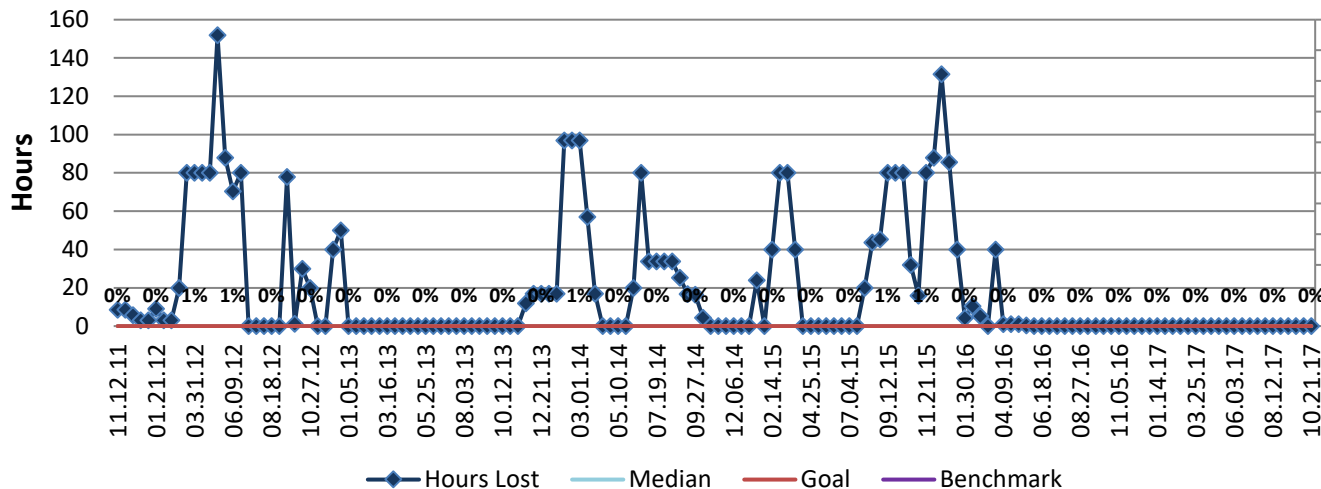
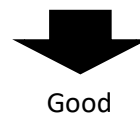
Process: Safety

Baseline, Goal, & Benchmark	Source Summary	Continuous Improvement Summary
Baseline: FY 12 Monthly average: 99 hours Goal: Zero hours lost due to work related illness and injury  Benchmark: TBD	Data Source: Payable Time PeopleSoft  Goal Source: Scope Summary  Benchmark Source: TBD	Plan-Do-Check-Act Step 8: Monitor and diagnose Measurement Method: The total number of hours per month employees were absent due to a work place injury or an illness contracted at work, rate calculated by dividing by total standard hours Why Measure: Minimize number & severity of workplace injuries/illness Next Improvement Step: Analyze current safety programs and create safety action plan.

### How Are We Doing?

10.23.16-10.21.17 12 Month Goal	10.23.16-10.21.17 12 Month Actual		10.08.17-10.21.17 Goal	10.08.17-10.21.17 Actual	
<b>0</b>	<b>0</b>	🚦	<b>0</b>	<b>0</b>	🚦
Hours	Hours		Hours	Hours	

## Hours Lost Due to Work Related Injury/Illness



Root cause analysis is not necessary because there is no gap between the goal and current performance.