

Hours Lost Due to Work Related Injury/Illness Codes & Regulations



KPI Owner: Debbie Howell

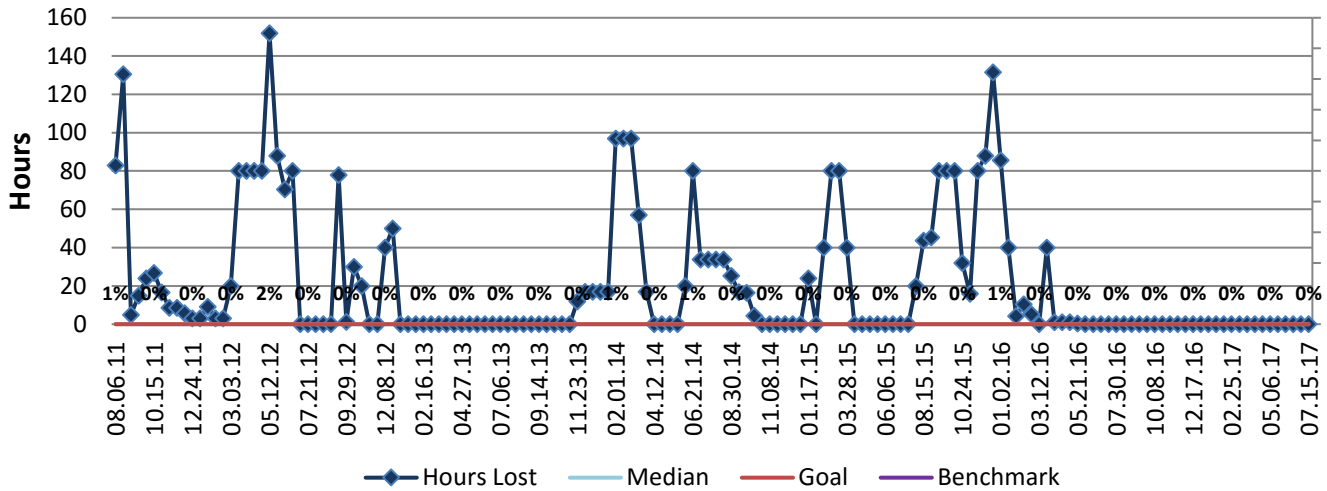
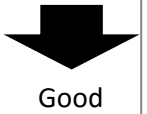
Process: Safety

| Baseline, Goal, & Benchmark | Source Summary | Continuous Improvement Summary |
|---|---|--|
| Baseline: FY 12 Monthly average: 99 hours Goal: Zero hours lost due to work related illness and injury Benchmark: TBD | Data Source: Payable Time PeopleSoft Goal Source: Scope Summary Benchmark Source: TBD | Plan-Do-Check-Act Step 8: Monitor and diagnose Measurement Method: The total number of hours per month employees were absent due to a work place injury or an illness contracted at work, rate calculated by dividing by total standard hours Why Measure: Minimize number & severity of workplace injuries/illness Next Improvement Step: Analyze current safety programs and create safety action plan. |

How Are We Doing?

| 07.17.16-07.15.17 12 Month Goal | 07.17.16-07.15.17 12 Month Actual | | 07.02.17-07.15.17 Goal | 07.02.17-07.15.17 Actual | |
|------------------------------------|--------------------------------------|--|---------------------------|-----------------------------|--|
| 0 | 0 | | 0 | 0 | |
| Hours | Hours | | Hours | Hours | |

Hours Lost Due to Work Related Injury/Illness



Root cause analysis is not necessary because there is no gap between the goal and current performance.