

Hours Lost Due to Work Related Injury/Illness Youth Detention Services



KPI Owner: AD's and EA

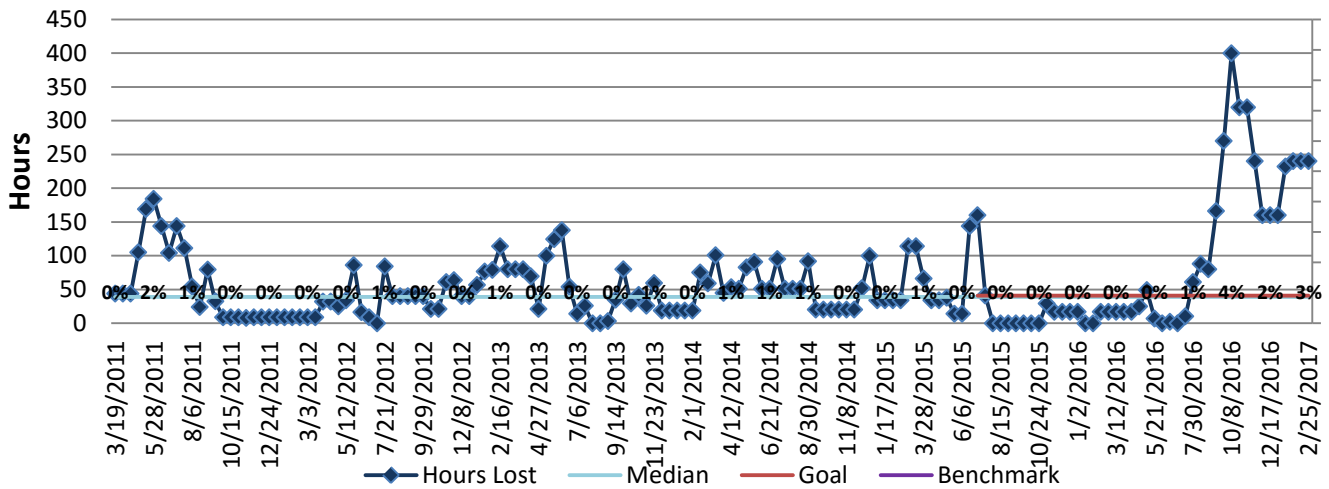
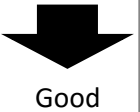
Process: Time and Attendance

Baseline, Goal, & Benchmark	Source Summary	Continuous Improvement Summary
Baseline: FY16 - 466.3 Goal: Reduce hours lost due to work related illness and injury by 20% of previous fiscal year numbers. Benchmark: TBD	Data Source: Payable Time PeopleSoft Goal Source: Scope Summary Benchmark Source: TBD	Plan-Do-Check-Act Step 5: Pilot short term and/or long term solutions Measurement Method: The total number of hours per month employees were absent due to a work place injury or an illness contracted at work, rate calculated by dividing by total standard hours Why Measure: Minimize number & severity of workplace injuries/illness Next Improvement Step: Analyze Greenbelt project, start tracking vacancy to fill rate, rework goal language start cross training

How Are We Doing?

02.28.16-02.25.17 12 Month Goal	02.28.16-02.25.17 12 Month Actual		02.12.17-02.25.17 Goal	02.12.17-02.25.17 Actual	
1,056	3,522	🚦	41	240	🚦
Hours	Hours		Hours	Hours	

Hours Lost Due to Work Related Injury/Illness



02.28.16-02.25.17 Pareto Analysis

