

# Average Daily Population (ADP) Youth Detention Services



KPI Owner: Director

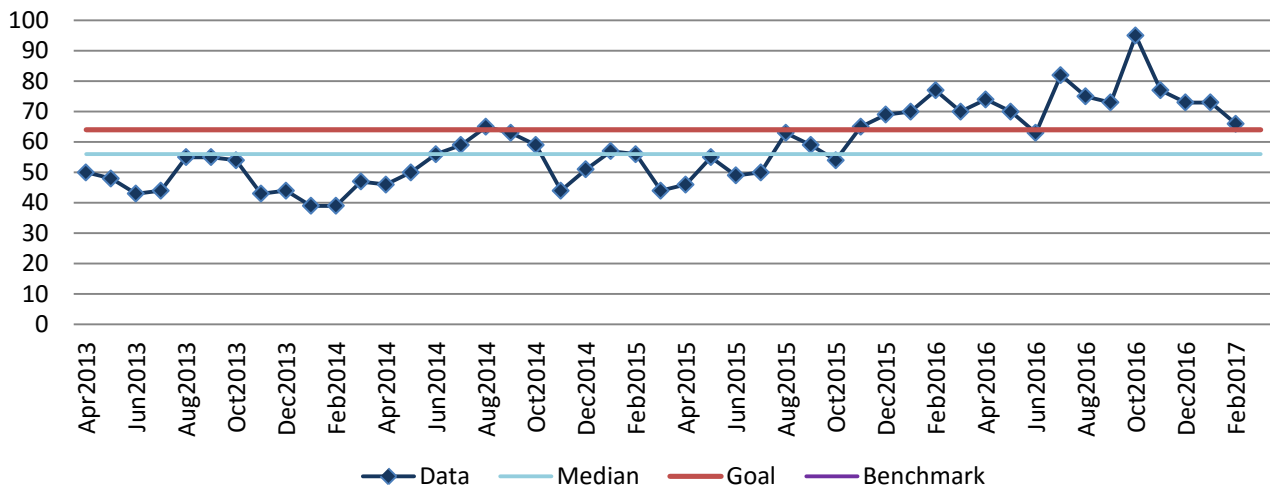
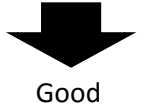
Process: Department Productivity

| Baseline, Goal, & Benchmark   | Source Summary   | Continuous Improvement Summary   |
|---|--|--|
| Baseline: FY16 average is 69<br>Goal: Maintain and average daily population of 64 or less on any given day.<br>Benchmark: TBD | Data Source: XJAIL<br>Goal Source: JJAC<br>Benchmark Source: TBD | N/A - Input Measure<br>Measurement Method: Calculate total number youth detained/ number of days in the month<br>Why Measure: To monitor previous population agreement resolution<br>Next Improvement Step: Revise population agreement resolution |

### How Are We Doing?

| Apr2016-Mar2017<br>12 Month Goal | Mar2016-Feb2017<br>12 Month Actual |  | Feb2017 Goal | Feb2017 Actual |  |
|----------------------------------|------------------------------------|--|--------------|----------------|--|
| <b>64</b>                        | <b>75</b>                          |  | <b>64</b>    | <b>66</b>      |  |
| Units                            | Units                              |  | Units        | Units          |  |

## Average Daily Population (ADP)



**Root cause analysis is not necessary .**