

# Hours Lost Due to Work Related Injury/Illness Fleet & Facilities



KPI Owner: Cathy Duncan

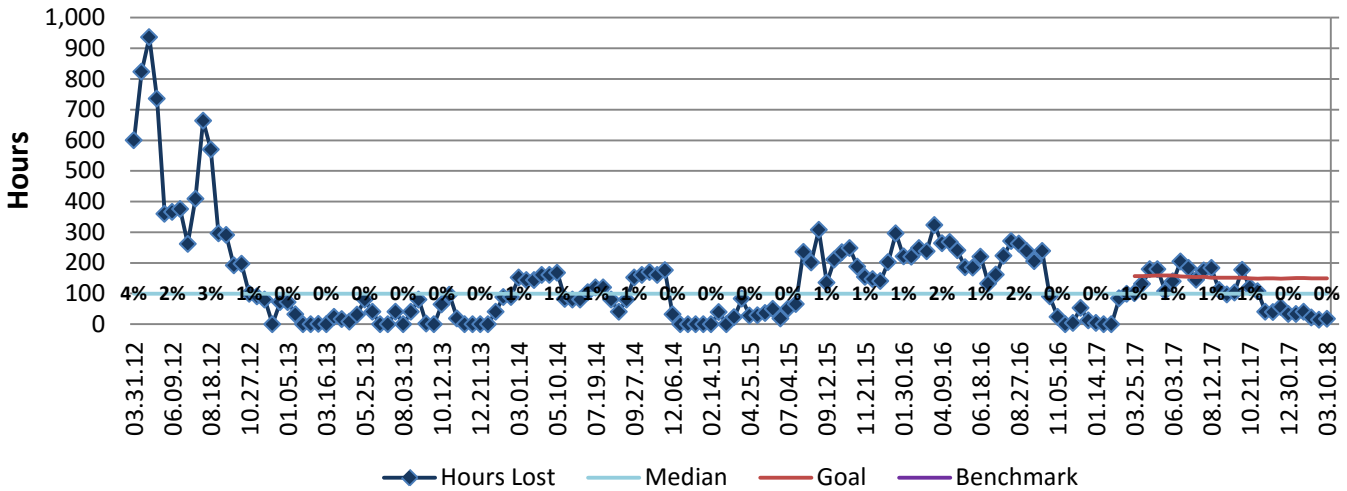
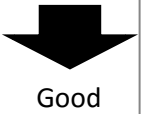
Process: Overtime Management

Baseline, Goal, & Benchmark	Source Summary	Continuous Improvement Summary
Baseline: 1% Goal: Keep hours due to work related injury / sickness at less than 1% of total hours.  Benchmark: 1% of total hours	Data Source: Payable Time PeopleSoft  Goal Source: Scope Summary  Benchmark Source: TBD	Plan-Do-Check-Act Step 5: Pilot short term and/or long term solutions Measurement Method: The total number of hours per month employees were absent due to a work place injury or an illness contracted at work, rate calculated by dividing by total standard hours Why Measure: Minimize number & severity of workplace injuries/illness Next Improvement Step: Continue to monitor. Continue to focus on workplace safety

### How Are We Doing?

03.12.17-03.10.18 12 Month Goal	03.12.17-03.10.18 12 Month Actual		02.25.18-03.10.18 Goal	02.25.18-03.10.18 Actual	
<b>3,970</b>	<b>2,735</b>	🚦	<b>150</b>	<b>17</b>	🚦
Hours	Hours		Hours	Hours	

## Hours Lost Due to Work Related Injury/Illness



**The seven basic quality tools, "5 Whys" technique, brainstorming and other methods will be applied to the measure graphed above. The purpose of using the tools/methods is to understand what makes performance less than desirable if performance is not best in class.**