

Vehicles in Shop - Work in Progress Truck Fleet & Facilities



KPI Owner: Matt Maskey

Process: Vehicle Repair

Baseline, Goal, & Benchmark	Source Summary	Continuous Improvement Summary
Baseline: TBD Goal: Maintain 24 mechanics assigned to the Fleet Truck repairs Benchmark: TBD	Data Source: KPI Workbook Goal Source: Fleet Management Benchmark Source: TBD	Plan-Do-Check-Act Step 8: Monitor and diagnose Measurement Method: Count the number of mechanics assigned to Fleet Truck repairs Why Measure: Determine the ideal number of mechanics needed Next Improvement Step: Continue to monitor and diagnose

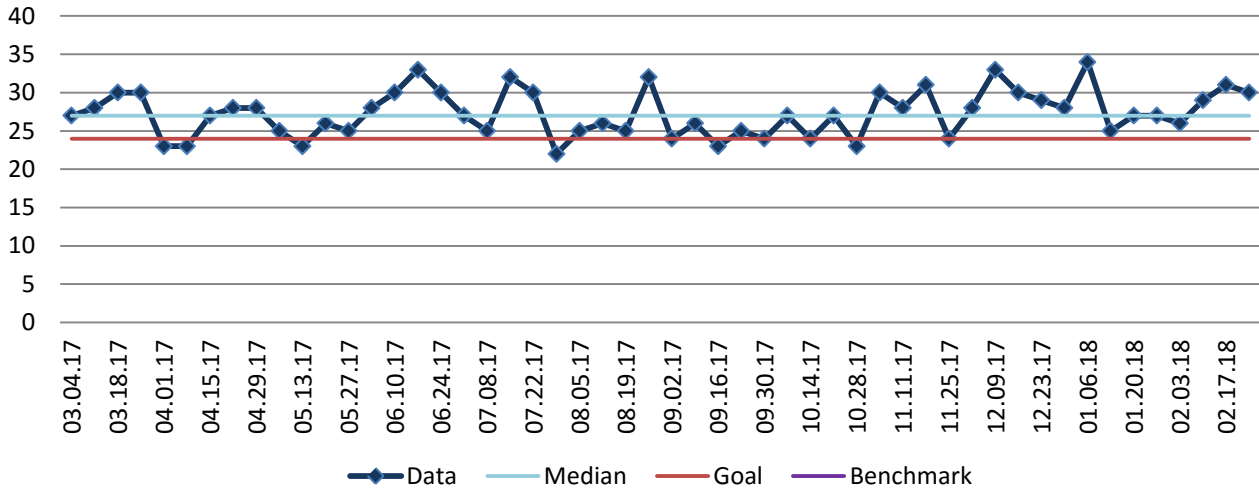
How Are We Doing?

02.26.17-02.24.18 12 Month Goal	02.26.17-02.24.18 12 Month Actual		02.18.18-02.24.18 Goal	02.18.18-02.24.18 Actual	
24	27	🚦	24	30	🚦
Average # Mech.	Average # Mech.		Mechanics	Mechanics	

Vehicles in Shop - Work in Progress Truck



Good



Root cause analysis is not necessary because there is no gap between the goal and current performance.