

Metro Demolitions Develop Louisville



KPI Owner: Sally Jessel and Carrie Fry

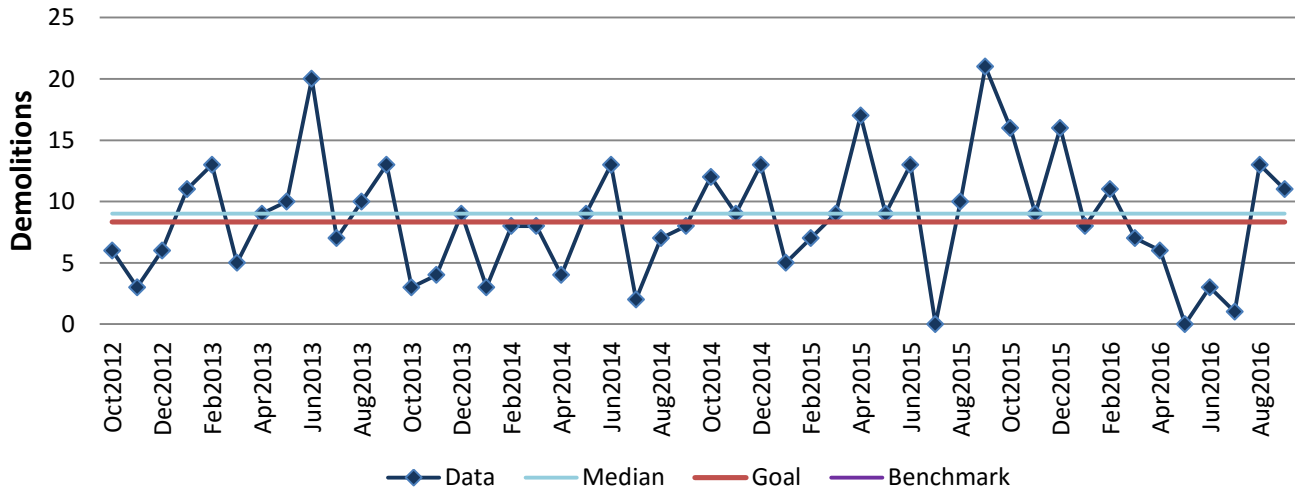
Process: Demolition

Baseline, Goal, & Benchmark	Source Summary	Continuous Improvement Summary
Baseline: FY16, 107 structures demolished Goal: Demolish 100 structures in FY17; this relates to Mayor's Goal 16: Resolve Abandoned Properties; it is an initiative to demolish blighted properties Benchmark: TBD	Data Source: Hansen Goal Source: IDT and Department Team Goal Benchmark Source: TBD	Plan-Do-Check-Act Step 4: Generate and prioritize potential solutions Measurement Method: Count of vacant/abandoned structures demolished monthly by Louisville Metro Why Measure: Demo candidate properties pose a health and safety concern to citizens and depress property values and community vitality Next Improvement Step: Implementation of a property severity ranking to prioritize demolition cases

How Are We Doing?

Oct2015-Sep2016 12 Month Goal	Oct2015-Sep2016 12 Month Actual		Sep2016 Goal	Sep2016 Actual	
100	101		8	11	
Demolitions	Demolitions		Demolitions	Demolitions	

Metro Demolitions



Root cause analysis is not necessary because there is no gap between the goal and current performance.