

EEOC Discrimination Cases Closed Human Relations Commission



KPI Owner: Rotonia Sanford

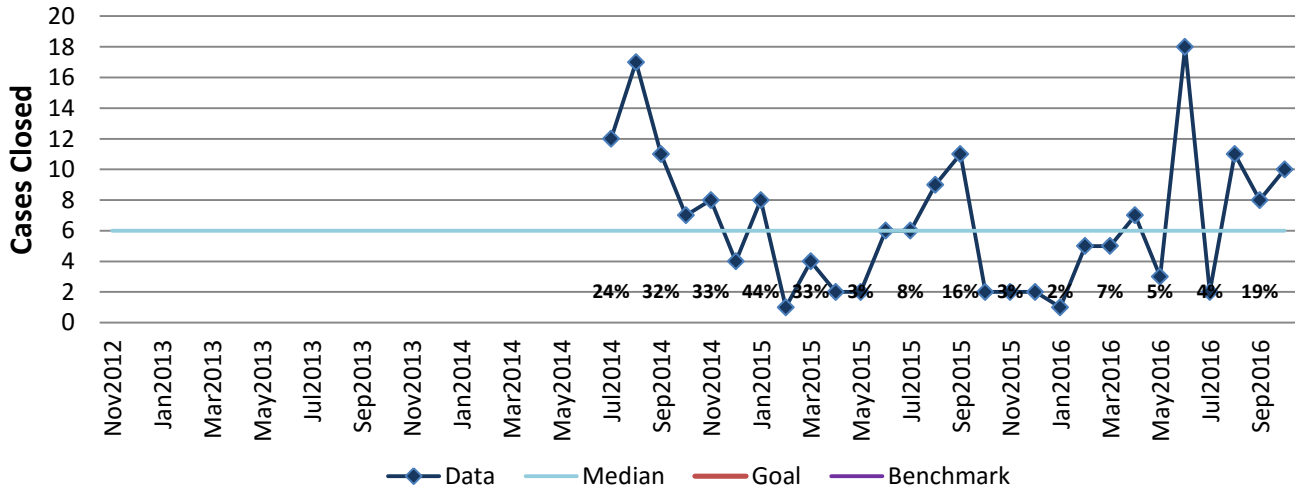
Process: Enforcement & Investigation of Discrimination

Baseline, Goal, & Benchmark	Source Summary	Continuous Improvement Summary
Baseline: TBD Goal: TBD Benchmark: TBD	Data Source: IMS Goal Source: TBD Benchmark Source: TBD	Plan-Do-Check-Act Step 1: Define the problem Measurement Method: Count of discrimination cases filed by month. Why Measure: EEOC requires information regarding status of cases. Next Improvement Step: TBD

How Are We Doing?

Nov2015-Oct2016 12 Month Goal	Nov2015-Oct2016 12 Month Actual		Oct2016 Goal	Oct2016 Actual	
TBD	74		TBD	10	
Cases Closed	Cases Closed		Cases Closed	Cases Closed	

EEOC Discrimination Cases Closed



Resolutions by Type FY 16

