

# Hours Lost Due to Work Related Injury/Illness Parking Authority of River City (PARC)



KPI Owner: Gerald Howell & Tiffany Propes

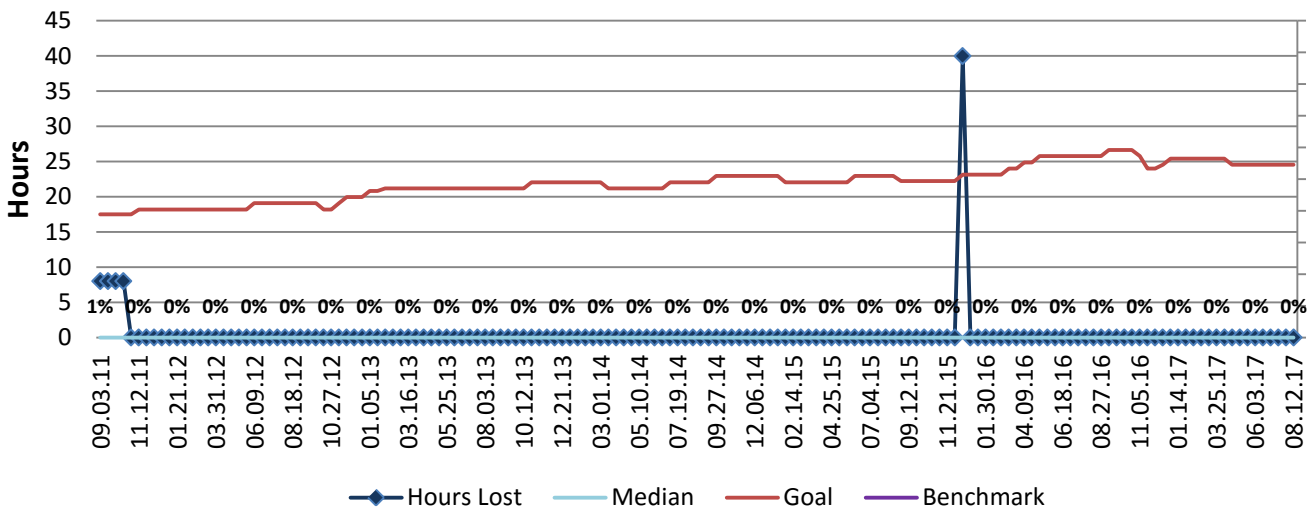
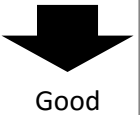
Process: Safety

Baseline, Goal, & Benchmark	Source Summary	Continuous Improvement Summary
Baseline: FY-16 & FY-17 Goal: To be at 1.1% or less  Benchmark: TBD	Data Source: Payable Time PeopleSoft  Goal Source: Scope Summary  Benchmark Source: TBD	Plan-Do-Check-Act Step 8: Monitor and diagnose  Measurement Method: The total number of hours per month employees were absent due to a work place injury or an illness contracted at work, rate calculated by dividing by total standard hours  Why Measure: Minimize number & severity of workplace injuries/illness  Next Improvement Step: To monitor

### How Are We Doing?

08.14.16-08.12.17 12 Month Goal	08.14.16-08.12.17 12 Month Actual		07.30.17-08.12.17 Goal	07.30.17-08.12.17 Actual	
<b>655</b>	<b>0</b>		<b>25</b>	<b>0</b>	
Hours	Hours		Hours	Hours	

## Hours Lost Due to Work Related Injury/Illness



**Root cause analysis is not necessary because there is no gap between the goal and current performance.**