

High Sick Leave Consumption Parking Authority of River City (PARC)



KPI Owner: Gerald Howell & Tiffany Propes

Process: Sick Leave Management

Baseline, Goal, & Benchmark	Source Summary	Continuous Improvement Summary
Baseline: FY-16 & FY-17 Goal: LMG 7.47% Benchmark: 7.47% LMG Top Quartile 05/07/16	Data Source: Payable Time Peoplesoft Goal Source: Scope Summary Benchmark Source: Enterprise KPI Report	Plan-Do-Check-Act Step 3: Determine and quantify root causes Measurement Method: # of employees who used 9 or more out of 12 sick days in a 12 month period; rate calculated by dividing by total employees Why Measure: Promote a culture in which sick time is used appropriately Next Improvement Step: To identify root cause of weakness

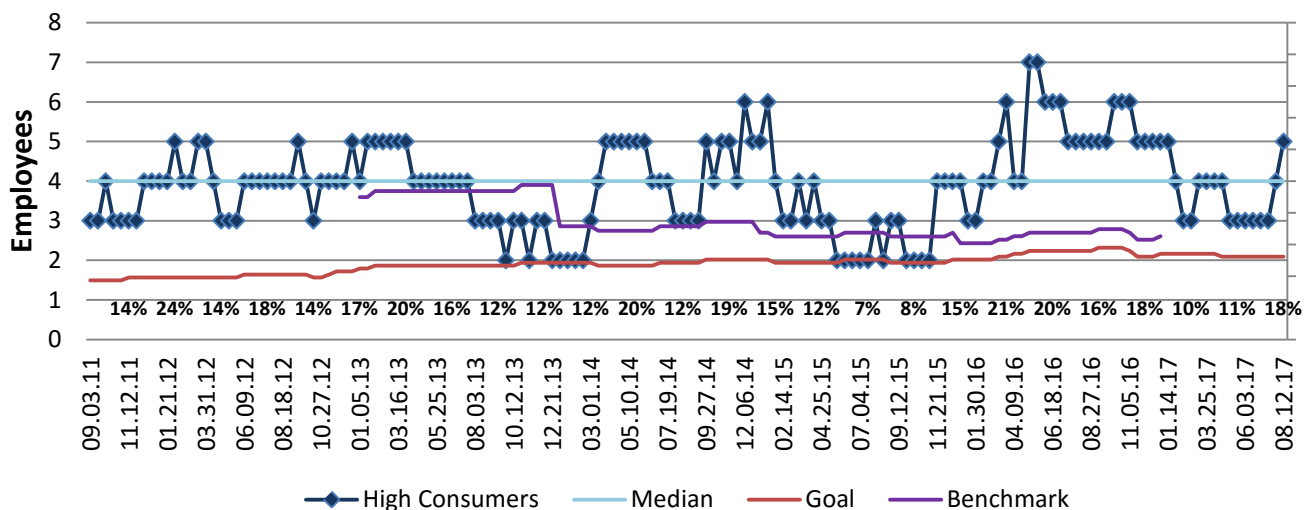
How Are We Doing?

08.30.15-08.12.17 Rolling 52wk Avg Goal	08.30.15-08.12.17 Rolling 52wk Avg		08.14.16-08.12.17 Goal	08.14.16-08.12.17 Actual	
2	4		2	5	
Employees	Employees		Employees	Employees	

High Sick Leave Consumption



Good



No Pareto Available

