

# High Sick Leave Consumption Parking Authority of River City (PARC)



KPI Owner: Gerald Howell & Tiffany Propes

Process: Sick Leave Management

Baseline, Goal, & Benchmark	Source Summary	Continuous Improvement Summary
Baseline: FY-16 & FY-17 Goal: LMG 7.47%  Benchmark: 7.47% LMG Top Quartile 05/07/16	Data Source: Payable Time Peoplesoft  Goal Source: Scope Summary  Benchmark Source: Enterprise KPI Report	Plan-Do-Check-Act Step 3: Determine and quantify root causes Measurement Method: # of employees who used 9 or more out of 12 sick days in a 12 month period; rate calculated by dividing by total employees  Why Measure: Promote a culture in which sick time is used appropriately Next Improvement Step: To identify root cause of weakness

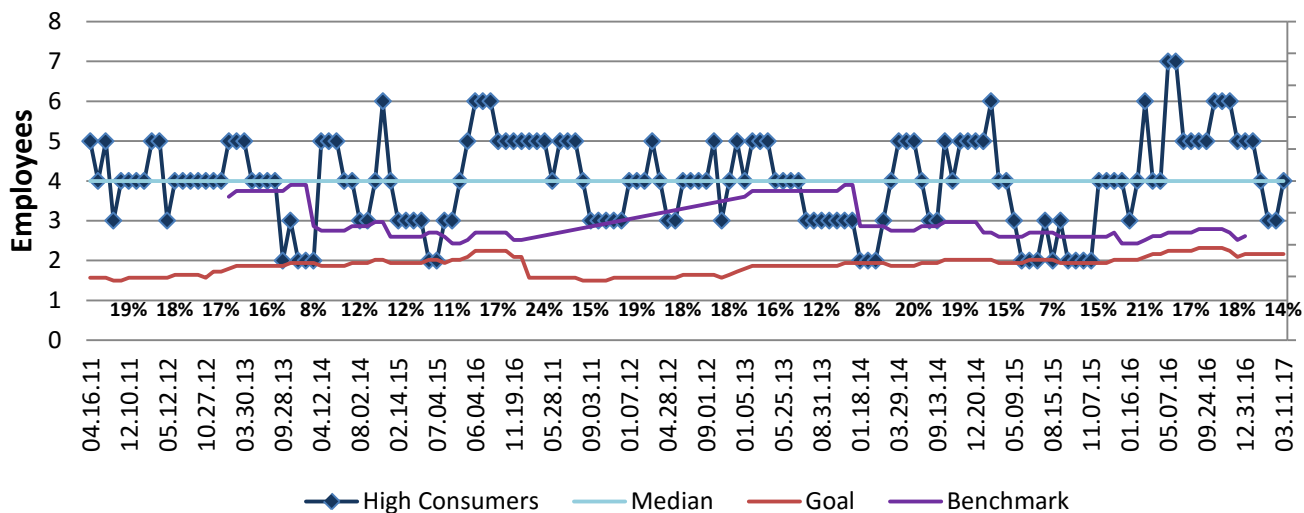
### How Are We Doing?

03.16.14-03.11.17 Rolling 52wk Avg Goal	03.16.14-03.11.17 Rolling 52wk Avg		10.25.15-03.11.17 Goal	10.25.15-03.11.17 Actual	
<b>2</b>	<b>5</b>		<b>2</b>	<b>4</b>	
<b>Employees</b>	<b>Employees</b>		<b>Employees</b>	<b>Employees</b>	

## High Sick Leave Consumption



Good



## No Pareto Available

