

Hours Lost Due to Work Related Injury/Illness Louisville Fire Department



KPI Owner: Lt. Col. Adkisson

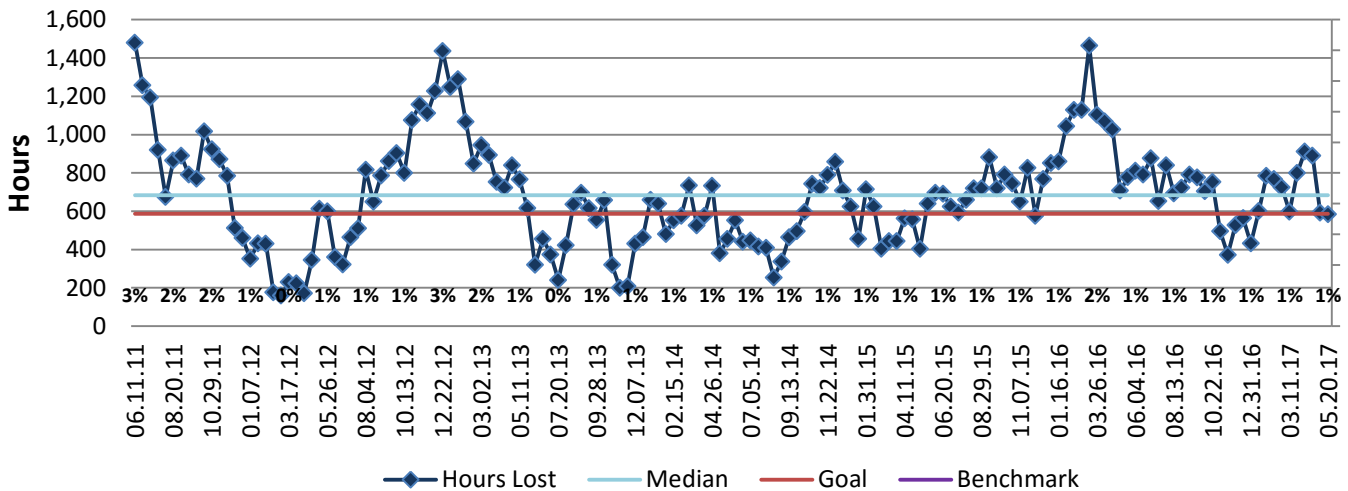
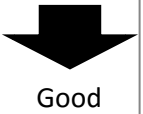
Process: Safety & Risk Management

Baseline, Goal, & Benchmark	Source Summary	Continuous Improvement Summary
Baseline: CY14: 14,531 hours in a year Goal: No more than 1,174 hours in a month or 587 hours per pay period (5.9 LTI) Benchmark: TBD	Data Source: Payable Time PeopleSoft Goal Source: Scope Summary Benchmark Source: TBD	Plan-Do-Check-Act Step 4: Generate and prioritize potential solutions Measurement Method: The total number of hours per month employees were absent due to a work place injury or an illness contracted at work, rate calculated by dividing by total standard hours Why Measure: Minimize number & severity of workplace injuries/illness Next Improvement Step: Pilot short term and/or long term solutions.

How Are We Doing?

05.22.16-05.20.17 12 Month Goal	05.22.16-05.20.17 12 Month Actual		05.07.17-05.20.17 Goal	05.07.17-05.20.17 Actual	
15,262	18,053	⬇️	587	584	⬆️
Hours	Hours		Hours	Hours	

Hours Lost Due to Work Related Injury/Illness



05.22.16-05.20.17 Pareto Analysis

