

Lost Time Injury Rate (cases with days away from work) Louisville Fire Department



KPI Owner: Lt. Col. Randy Croney

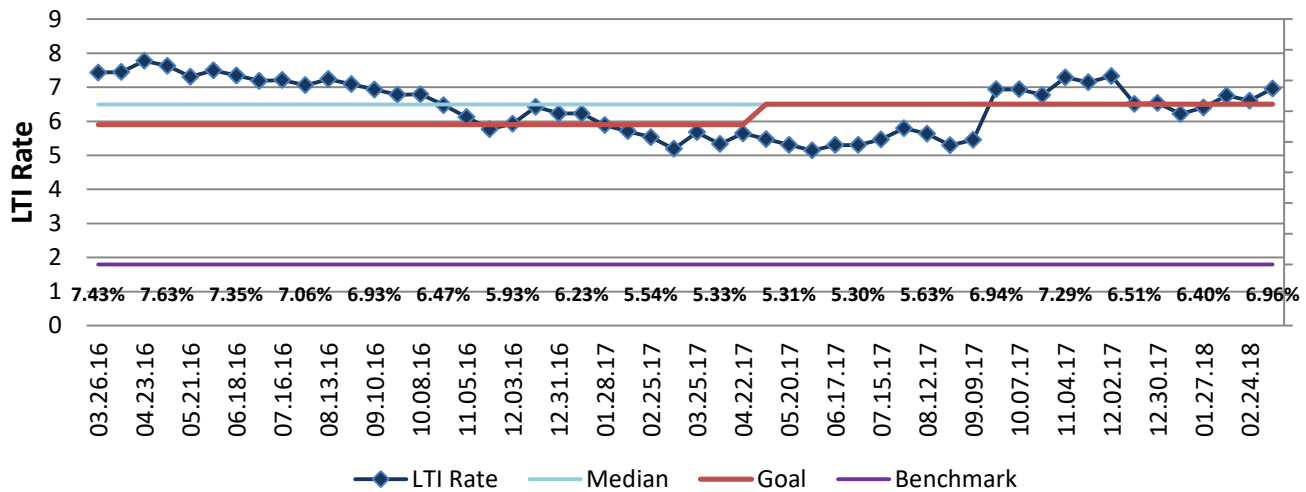
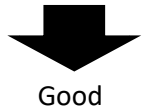
Process: Safety & Risk Management

Baseline, Goal, & Benchmark	Source Summary	Continuous Improvement Summary
Baseline: CY14: 5.86 per 100 employees Goal: To meet the benchmark of 6.5 per 100 employees Benchmark: 1.8% all local gov Nov2013	Data Source: OSHA Logs & Payable Time Goal Source: Scope Summary Benchmark Source: Bureau Labor Statistics	Plan-Do-Check-Act Step 4: Generate and prioritize potential solutions Measurement Method: In a 12 month period, # of OSHA recordables with lost work days times 200,000 divided by the total # of hours worked Why Measure: minimize number & severity of workplace injuries/illness Next Improvement Step: Pilot short term and/or long term solutions.

How Are We Doing?

03.27.16-03.10.18 Rolling 52wk Avg Goal	03.27.16-03.10.18 Rolling 52wk Avg		03.12.17-03.10.18 Goal	03.12.17-03.10.18 Actual	
6.50	6.13	🚦	6.50	6.96	🚦
LTI Rate	LTI Rate		LTI Rate	LTI Rate	

Lost Time Injury Rate (cases with days away from work)



03.12.17-03.10.18 Pareto Analysis

