

# Hours Lost Due to Work Related Injury/Illness Louisville Fire Department



KPI Owner: Lt. Col. Adkisson

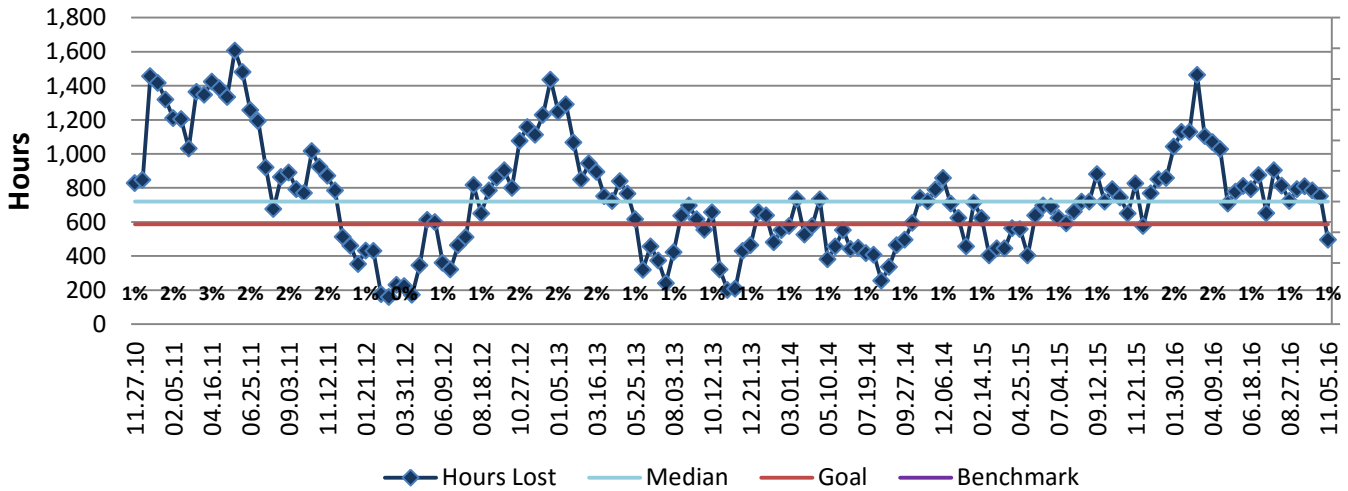
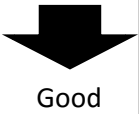
Process: Safety & Risk Management

Baseline, Goal, & Benchmark	Source Summary	Continuous Improvement Summary
Baseline: CY14: 14,531 hours in a year Goal: No more than 1,174 hours in a month or 587 hours per pay period (5.9 LTI)  Benchmark: TBD	Data Source: Payable Time PeopleSoft  Goal Source: Scope Summary  Benchmark Source: TBD	Plan-Do-Check-Act Step 3: Determine and quantify root causes Measurement Method: The total number of hours per month employees were absent due to a work place injury or an illness contracted at work, rate calculated by dividing by total standard hours Why Measure: Minimize number & severity of workplace injuries/illness Next Improvement Step: Analyze the data to determine root causes of time away from work.

### How Are We Doing?

11.08.15-11.05.16 12 Month Goal	11.08.15-11.05.16 12 Month Actual		10.23.16-11.05.16 Goal	10.23.16-11.05.16 Actual	
<b>15,262</b>	<b>22,533</b>	⬇️	<b>587</b>	<b>496</b>	⬆️
Hours	Hours		Hours	Hours	

## Hours Lost Due to Work Related Injury/Illness



## 11.08.15-11.05.16 Pareto Analysis

